



Capacity up to 7500 kg

### DESCRIPTION

- Approved die-cast aluminum crane scale complete with upper shackle and lower swivel hook; suitable for bridge crane.
- 5-digit semi-alphanumeric red LED display (30 mm height).
- 4 signalling LED.
- 6 V rechargeable internal battery, 10 Ah capacity.
- Operating time: 60 hours.
- External battery charger 100-240 VAC included.
- Remote control with range up to 10 m line of sight.

### MAIN FUNCTIONS

- Semi-automatic tare (net/gross weight).
- Weight zero setting.
- Tare weight zero setting.
- High resolution visualization.
- Remote control functions: high resolution, zero, net weight, stand-by.
- Energy saving mode.



CAPACITY	kg	OIML R76	DIVISION (kg)	NET WEIGHT (kg)	CODE
1500		•	e=0.5	16	DTEM1.5T
3000		•	e=1	23	DTEM3T
7500		•	e=5	32	DTEM7.5T

### CERTIFICATIONS



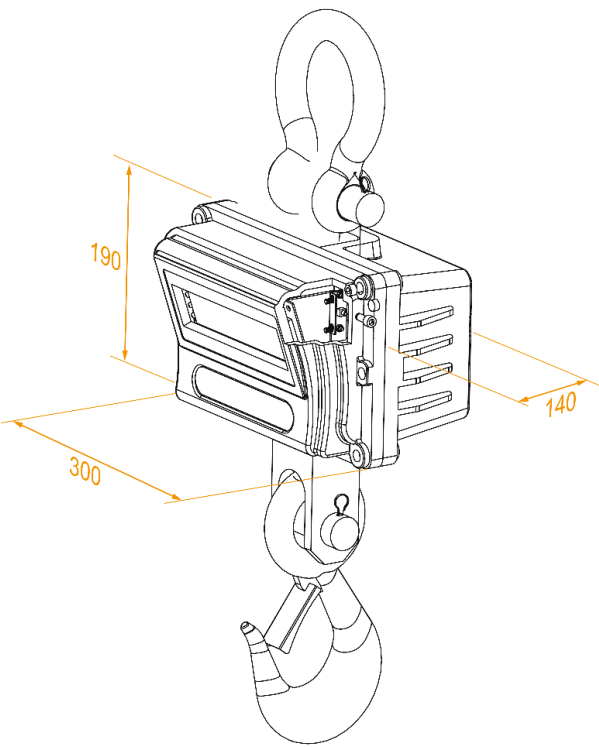
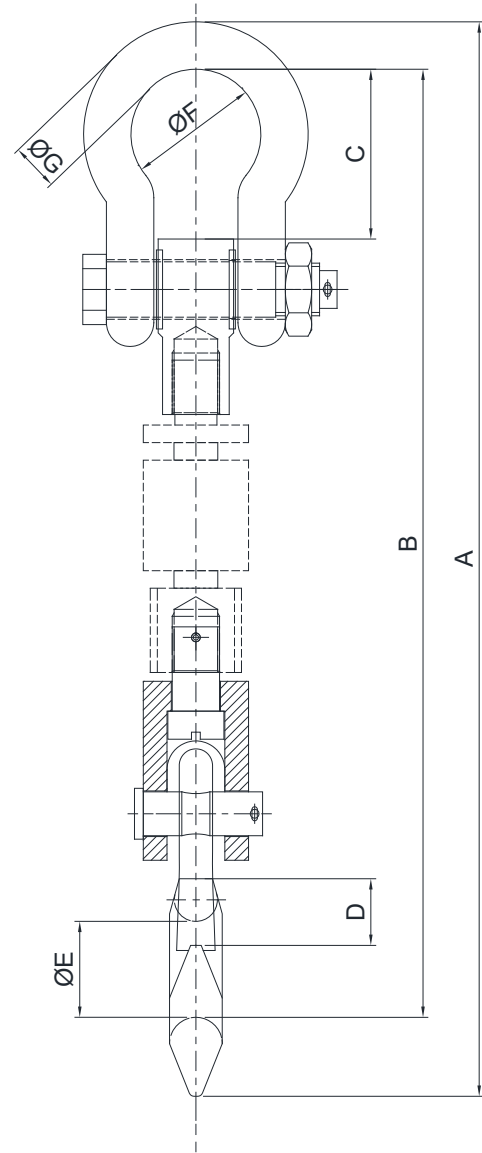
OIML R76:2006, class III, 3000 divisions



Conformity assessment (initial verification)

Compliant to machinery directive 2006/42/EC and EN 13155:2003/A2:2009

DIMENSIONS (mm)



Mod.	Load Cell	Breaking load	A	B	C	D	ØE	ØF	ØG
DTEM1.5T	3t	12t	650 $\pm$ 10	580 $\pm$ 10	125	35	38.5	60	26
DTEM3T	5t	20t	740 $\pm$ 10	660 $\pm$ 10	125	47	48	80	26
DTEM6T	10t	40t	860 $\pm$ 10	770 $\pm$ 10	122	54.4	62	90	31
DTEM7.5T	10t	40t	860 $\pm$ 10	770 $\pm$ 10	122	54.4	62	90	31

TECHNICAL FEATURES

Working load limit without releasing the load (% of full scale)	300%
Safe overload (% of full scale)	200%
Ultimate overload (% of full scale)	400%
Humidity (condensate free)	10÷90%
Working temperature	-10°C +40°C

The Company reserves the right to make changes to the technical data, drawings and images without notice.