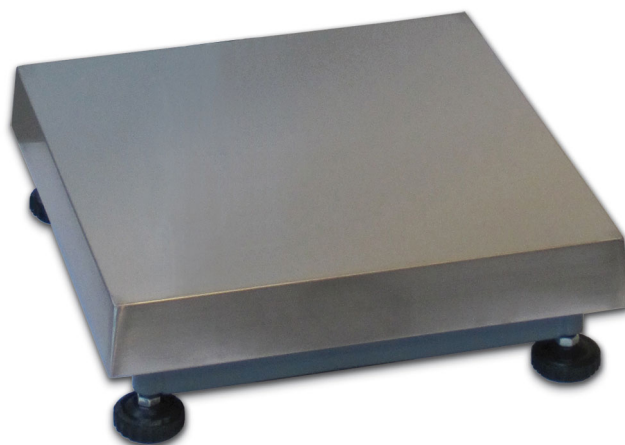


SINGLE CELL PLATFORM WITH STAINLESS STEEL LOADING PLATE



Capacity up to 600 kg



- Painted steel tubular structure.
- AISI 304 stainless steel loading plate.
- Aluminum alloy IP65 load cell.
- Feet in galvanized steel and polyamide.
- Connection for indicator-holder column.

CAPACITY	kg	ACCURACY CLASS C3	ACCURACY CLASS C4				DIMENSION (mm)	WEIGHT (kg)	CODE
6		•	—	•	•		300 x 300	6	ACN6
15		•	•	•	•		300 x 300	6	ACN15
30		•	•	•	•		300 x 300	6	ACN30
50		•	•	•	•		300 x 300	6	ACN50
60		•	•	•	•		400 x 400	8.5	ACN60
150		•	•	•	•		400 x 400	8.5	ACN120
60		•	•	—	•		600 x 600	24	ACN60L
150		•	•	—	•		600 x 600	24	ACN150
300		•	•	—	•		600 x 600	24	ACN300
600		•	•	—	•		800 x 800	48.5	ACN600

ON REQUEST

CERTIFICATIONS



OIML R60 C3



Equivalent of the CE marking for the United Kingdom

CERTIFICATIONS ON REQUEST



ATEX II 2GD (zone 1-2-21-22)



IECEx (zone 1-2-21-22)



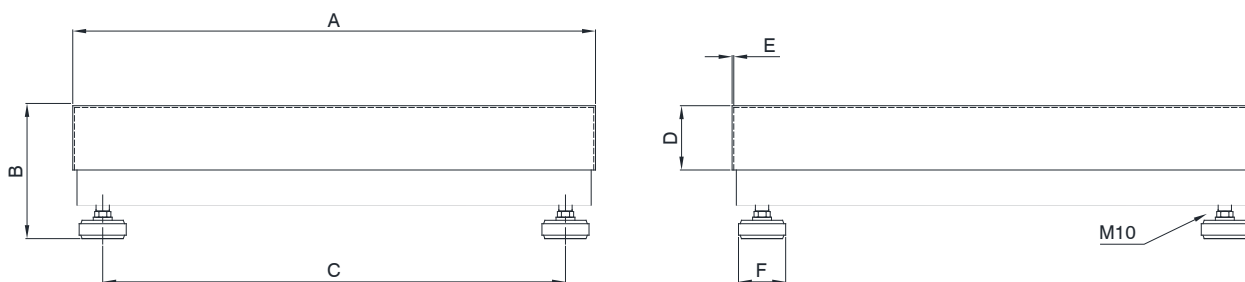
OIML R60 C4



NTEP - compliant to the metrological standards of United States and Canada

SINGLE CELL PLATFORM WITH STAINLESS STEEL LOADING PLATE

DIMENSIONS (mm)



Code	Load cells capacities	Platforms	A	B	C	D	E	F	Gross Weight
ACN6 / 15 / 30 / 50	AZL 10 / 20 / 50 / 100 kg	300 x 300 mm	300	125	237	53	1.5	60	6 kg
ACN60 / 120	AM 100 / 200 kg	400 x 400 mm	400	145	337	60	1.5	60	8.5 kg
ACN60L / 150 / 300	APL 100 / 200 / 500 kg	600 x 600 mm	600	160	537	70	1.5	60	24 kg
ACN600	ATL 1000 kg	800 x 800 mm	800	170	715	90	1.5	60	48.5 kg



ELECTRICAL CONNECTIONS

	ACN 6 ÷ 120	ACN 60L/150/300	ACN 600
SHIELD			
+ SIGNAL	GREEN	GREEN	BLUE
+ EXCITATION + REF./SENSE	RED BLUE	RED BLUE	RED BROWN
- SIGNAL	WHITE	WHITE	WHITE
- EXCITATION - REF./SENSE	BLACK BROWN	BLACK YELLOW	YELLOW BLACK

■ where provided



OPTIONS ON REQUEST

DESCRIPTION	CODE
 <p>Stainless steel indicator-holder column (Ø38 mm, height 700 mm). Painted steel bracket for platform mounting.</p>	COLONNAM + STAFFACN
 <p>Non-standard capabilities.</p>	

The Company reserves the right to make changes to the technical data, drawings and images without notice.