



Capacity from 500 kg to 10000 kg



- 17-4 PH STAINLESS STEEL
- COMBINED ERROR  $\leq \pm 0.02\%$  (0.017% C4)
- IP68 PROTECTION RATING

CAPACITY	kg	ACCURACY CLASS		NET WEIGHT (kg)
		C3	C4	
500		•	•	2.1
1000		•	•	2.1
2000		•	•	2.1
5000		•	–	4.2
7500		•	–	4.2
10000		•	–	4.2

ON REQUEST

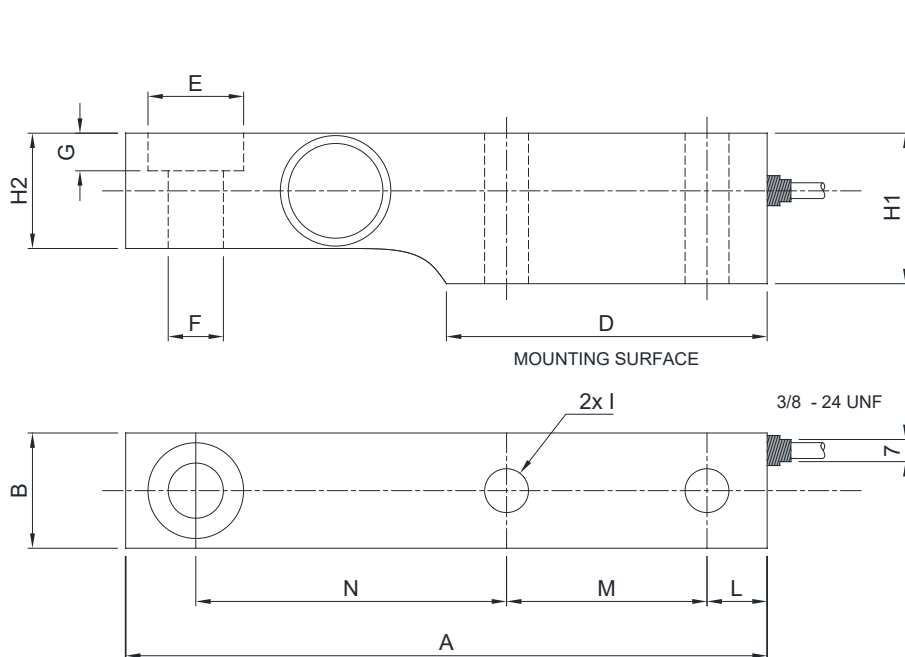
### CERTIFICATIONS

- OIML R60 C3
- Complies with the Eurasian Customs Union regulations
- Equivalent of the CE marking for the United Kingdom

#### CERTIFICATIONS ON REQUEST

	Calibration report
	LAT Accredia calibration certificate ISO 376 or ASTM E74 for capacities from 1000 kg to 10000 kg
	ATEX (zone 2-22)
	OIML R60 C4
	Complies with the Eurasian Customs Union regulations for use in potentially explosive atmospheres
	Complies with Chinese market regulations for use in potentially explosive atmospheres

### DIMENSIONS (mm)



	500 kg 1000 kg 2000 kg	5000 kg 7500 kg	10000 kg
A	203.2	235	235
B	36.48	47.5	55
D	101.6	111.2	111.2
E	Ø30.3	Ø41.3	Ø41.3
F	Ø17.5	Ø25.5	Ø25.5
G	11.9	15.75	15.75
H1	47.63	69.9	69.9
H2	36.5	47.6	58.6
I	Ø14	Ø22	Ø25
L	19.05	20.6	20.6
M	63.5	66.7	66.7
N	98.45	123.8	123.8

For the load cell fixing screws, provide the tightening torque indicated in the table

Screw	M12		M20		M24	
	6.8	8.8	6.8	8.8	6.8	8.8
Tightening torque	50 Nm	795 Nm	290 Nm	400 Nm	500 Nm	690 Nm

### TECHNICAL FEATURES

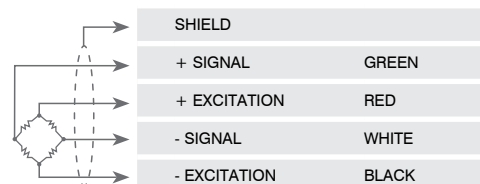
Material	17-4 PH stainless steel					
OIML R60 Accuracy class • Verification intervals	C3 • 3000			C4 • 4000		
Nominal load (E max)	500 - 1000 - 2000 5000 - 7500 - 10000 kg			500 - 1000 - 2000 kg		
Minimum verification interval (V min)	E max / 10000			E max / 15000		
Combined error	≤ ±0.02%			≤ ±0.017%		
Protection rating	IP68					

Rated output	2 mV/V ± 0.2% *	Input resistance	350 Ω ± 3.5
Temperature effect on zero	0.0018% °C	Output resistance	350 Ω ± 3.5
Temperature effect on span	0.0014% °C	Zero balance	< ±1%
Compensated temperature range	-10 °C / +40 °C	Insulation resistance	≥ 5000 MΩ
Operating temperature range	-35 °C / +65 °C	Safe overload (% of full scale)	150%
Creep at nominal load in 30 minutes	0.02%	Ultimate overload (% of full scale)	300%
Max supply voltage without damage	18 V	Deflection at nominal load	0.4 mm

\* Calibrated current output

### ELECTRICAL CONNECTIONS

Cable length	5 m (500-7500 kg); 10 m (10000 kg)
Cable diameter	5 mm
Cores	4 x 0.20 mm <sup>2</sup>



The Company reserves the right to make changes to the technical data, drawings and images without notice.