



Manufactured according to OIML R60 standards

Capacity from 5000 kg to 10000 kg



- SPECIAL STEEL
- COMBINED ERROR $\leq \pm 0.1\%$
- IP68 PROTECTION RATING

CAPACITY	kg	NET WEIGHT (kg)
5000		15.5
10000		16.2

CERTIFICATIONS



Complies with the Eurasian Customs Union regulations

Equivalent of the CE marking for the United Kingdom

CERTIFICATIONS ON REQUEST

Calibration report

LAT Accredia calibration certificate ISO 376 or ASTM E74 for capacities from 1000 kg to 10000 kg



ATEX II 1G 2D (zone 0-1-2-21-22) (CE - UKCA)



IECEx (zone 0-1-2-20-21-22)



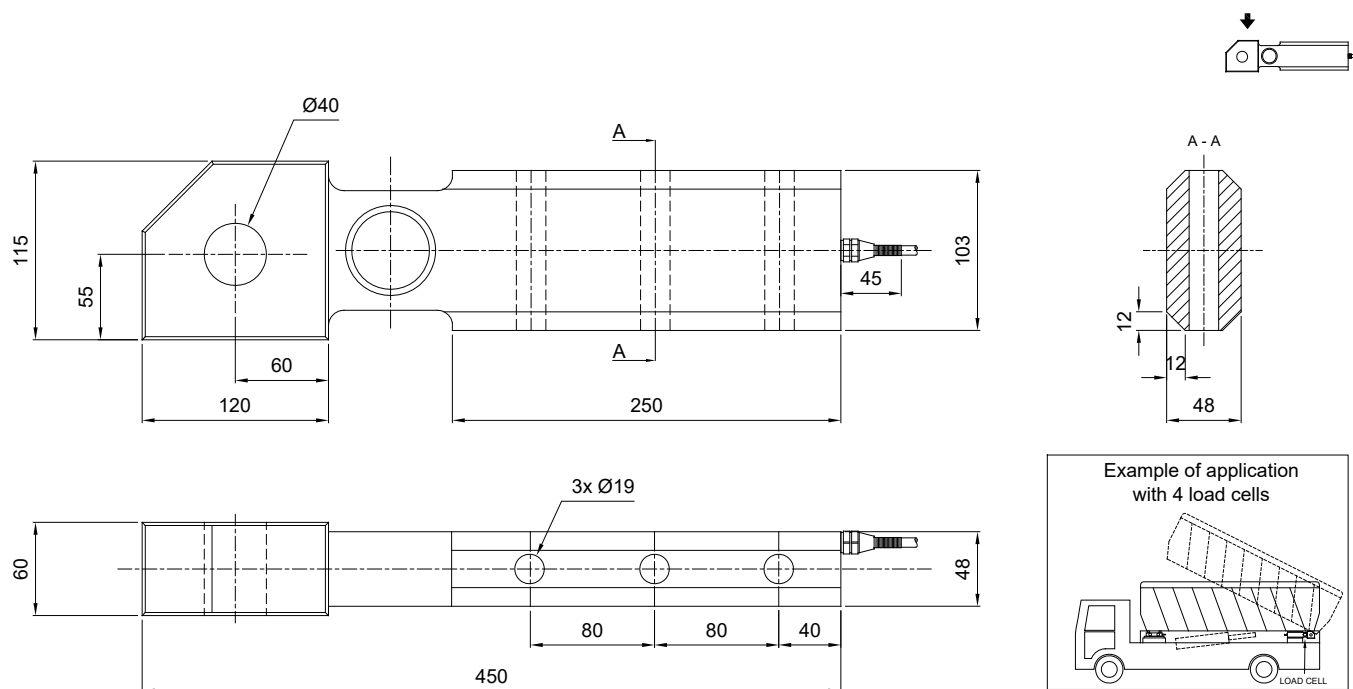
Complies with the Eurasian Customs Union regulations for use in potentially explosive atmospheres



Complies with Chinese market regulations for use in potentially explosive atmospheres

SHEAR BEAM LOAD CELLS FOR ON-BOARD VEHICLE WEIGHING

DIMENSIONS (mm)

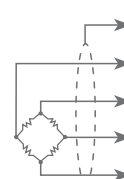


TECHNICAL FEATURES

Material	Special steel		
Nominal load (E max)	5000 - 10000 kg		
Combined error	$\leq \pm 0.1\%$		
Protection rating	IP68		
Rated output	1 mV/V $\pm 0.5\%$	Input resistance	400 $\Omega \pm 20$
Temperature effect on zero	0.005% $^{\circ}\text{C}$	Output resistance	352 $\Omega \pm 3$
Temperature effect on span	0.005% $^{\circ}\text{C}$	Zero balance	$\pm 2\%$
Compensated temperature range	-10 $^{\circ}\text{C}$ / +40 $^{\circ}\text{C}$	Insulation resistance	>5000 M Ω
Operating temperature range	-30 $^{\circ}\text{C}$ / +70 $^{\circ}\text{C}$	Safe overload (% of full scale)	150%
Creep at nominal load in 30 minutes	0.1%	Ultimate overload (% of full scale)	300%
Max supply voltage without damage	15 V	Deflection at nominal load	0.4 mm

ELECTRICAL CONNECTIONS

Cable length	10 m
Cable diameter	6 mm
Cores	6 x 0.24 mm ²



SHIELD	
+ SIGNAL	GREEN
+ EXCITATION	RED
+ REF./SENSE	BLUE
- SIGNAL	WHITE
- EXCITATION	BLACK
- REF./SENSE	YELLOW