

# DTX

## DOUBLE SHEAR BEAM LOAD CELLS

LAUMAS®



Capacity from 20 klb to 60 klb



- AISI 4340 NICKEL PLATED STEEL
- COMBINED ERROR  $\leq \pm 0.02\%$
- IP68 PROTECTION RATING

MOUNTING KIT



CAPACITY	kg	ACCURACY CLASS C3		NET WEIGHT (kg)
20klb / 9 ton		•	•	2.7
30klb / 13.6 ton		•	•	7.75
40klb / 18 ton		•	•	7.78
50klb / 23 ton		•	•	8.3
60klb / 27 ton		•	•	8.5

### CERTIFICATIONS

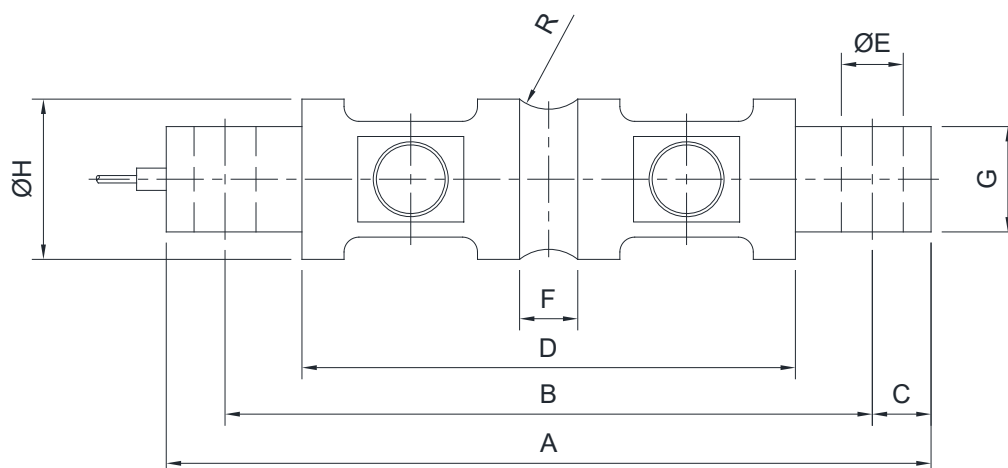
- OIML R60 C3
- Complies with the Eurasian Customs Union regulations
- Equivalent of the CE marking for the United Kingdom
- Complies with United Kingdom regulations for legal for trade use

#### CERTIFICATIONS ON REQUEST

	Calibration report
	LAT Accredia calibration certificate ISO 376 or ASTM E74 for capacities from 1000 kg to 10000 kg
	ATEX II 1G 2D (zone 0-1-2-21-22) (   )
	IECEx (zone 0-1-2-20-21-22)
	Complies with the Eurasian Customs Union regulations for use in potentially explosive atmospheres
	FM HazLoc - Complies with the United States and Canada regulations for use in potentially explosive atmospheres
	Complies with Chinese market regulations for use in potentially explosive atmospheres

Rev. 0.0

### DIMENSIONS (mm)



	A	B	C	D	ØE	F	G	ØH	R
<b>20 klb</b>	206	174.6	15.7	133	16.7	21.6	28.4	49.5	12.7
<b>30-60 klb</b>	260	215	22.4	165	27	25.7	60.2	76.2	25.4

### TECHNICAL FEATURES

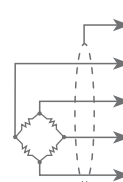
Material	AISI 4340 nickel plated steel		
OIML R60 Accuracy class • Verification intervals	C3 • 3000		
Nominal load (E max)	20, 30, 40, 50, 60 klb		
Minimum verification interval (V min)	E max / 10000 - E max / 15000		
Combined error	≤ ±0.023%		
Protection rating	IP68		

Rated output	3.0 mV/V ± 0.267%	Input resistance	700 Ω ± 7
Temperature effect on zero	0.002% °C	Output resistance	700 Ω ± 7
Temperature effect on span	0.002% °C	Zero balance	≤ ±1%
Compensated temperature range	-10 °C / +40 °C	Insulation resistance	≥ 5000 MΩ
Operating temperature range	-35 °C / +65 °C	Safe overload (% of full scale)	150%
Creep at nominal load in 30 minutes	0.016%	Ultimate overload (% of full scale)	300%
Max supply voltage without damage	18 V	Deflection at nominal load	0.6 mm

### ELECTRICAL CONNECTIONS

Cable length	9 m
Cable diameter	5 mm (20klb) / 8 mm (30klb-60klb)
Cores	4 x 0.22 mm <sup>2</sup>



SHIELD	
+ SIGNAL	GREEN
+ EXCITATION	RED
- SIGNAL	WHITE
- EXCITATION	BLACK