

ULTRA-LIGHT ALUMINUM PLATFORM - 4 LOAD CELLS IP68




Capacity 1000 kg



- Ultra-light anodized aluminum platform.
- Integrated ramps and sideguards.
- 4 load cells FTP 500 kg
AISI 420 stainless steel - IP68 (on request: IP69K).
- IP67 stainless steel junction box with equalization board and 6-wire output cable (length: 5 m).
- Galvanized steel adjustable feet, self-centering on sphere.
- Carrying handles and wheels.



CAPACITY	kg	ACCURACY CLASS C3		DIMENSION (mm)	WEIGHT (kg)	CODE
1000		•	•	1200 x 1600	55	PM1000

ON REQUEST

CERTIFICATIONS



OIML R60 C3



Equivalent of the CE marking for the United Kingdom

CERTIFICATIONS ON REQUEST



IP69K

Declaration of conformity + IP69K marking protection rating

Water protection in case of high-pressure or steam jet cleaning (test: pressurized water is sprayed from a distance of max 150 mm)
 Water pressure: 100 bar; temperature: 80 °C; test duration: 250 seconds (reference standard: DIN 40050-9)



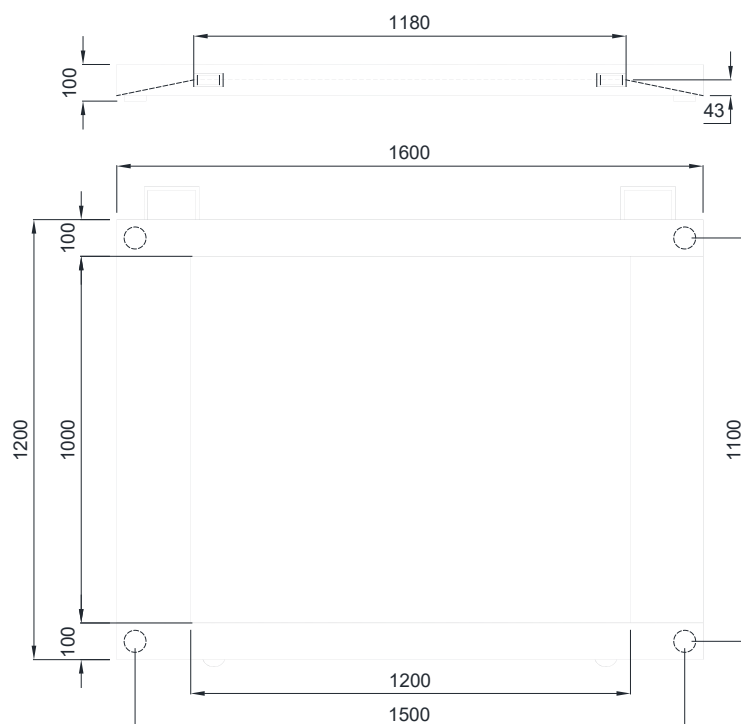
ATEX II 2GD (zone 1-2-21-22)



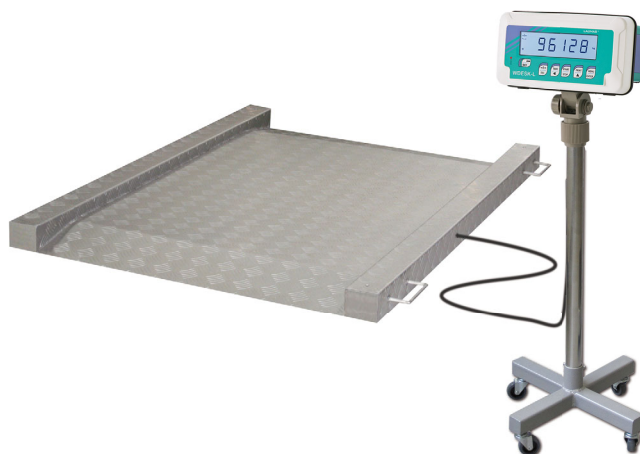
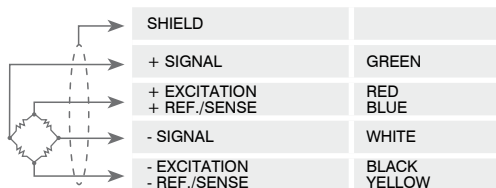
IECEx (zone 1-2-21-22)

ULTRA-LIGHT ALUMINUM PLATFORM - 4 LOAD CELLS IP68



DIMENSIONS (mm)



ELECTRICAL CONNECTIONS



OPTIONS ON REQUEST

DESCRIPTION	CODE
 <p>Stainless steel indicator-holder column (Ø38 mm, height 700 mm). Painted steel mobile pedestal.</p>	<p>COLONNAM + MOBILCOLONNA</p> <p>COLONNAM + MOBILCOLONNAINOX</p>
 <p>Non-standard capabilities.</p>	

The Company reserves the right to make changes to the technical data, drawings and images without notice.