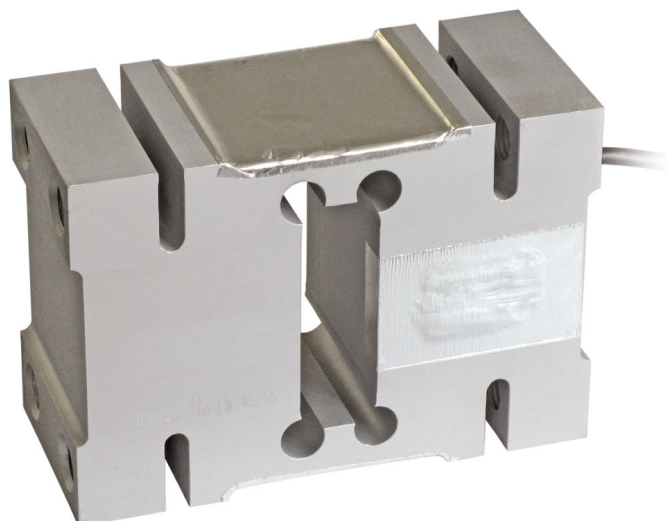




Capacity from 1000 kg to 2000 kg



- ALUMINUM ALLOY
- COMBINED ERROR  $\leq \pm 0.02\%$
- IP65 PROTECTION RATING

CAPACITY	kg	ACCURACY CLASS C3		PLATFORM (mm)	NET WEIGHT (kg)
1000		•	•	1200 x 1200	3.8
2000		•	•	1200 x 1200	3.8

### CERTIFICATIONS

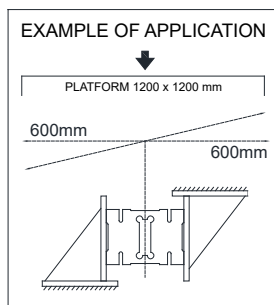
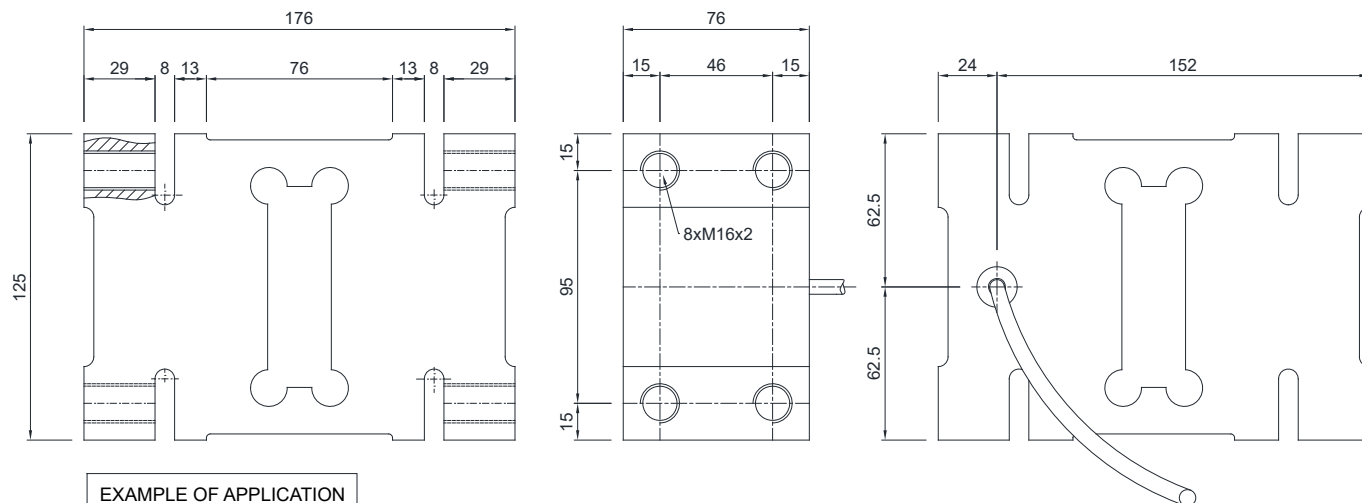
- OIML R60 C3
- Complies with the Eurasian Customs Union regulations
- Equivalent of the CE marking for the United Kingdom
- Complies with United Kingdom regulations for legal for trade use

#### CERTIFICATIONS ON REQUEST

	Calibration report
	LAT Accredia calibration certificate ISO 376 or ASTM E74 for capacities from 1000 kg to 10000 kg
	ATEX II 1G 2D (zone 0-1-2-21-22) (CE - UK CA)
	IECEx (zone 0-1-2-20-21-22)
	Complies with the Eurasian Customs Union regulations for use in potentially explosive atmospheres
	Complies with Chinese market regulations for use in potentially explosive atmospheres

## SINGLE-POINT LOAD CELL for platforms 1200x1200 mm

### DIMENSIONS (mm)



For the load cell fixing screws, provide the tightening torque indicated in the table

Screw	M16	
Screw class	6.8	8.8
Tightening torque	165 Nm	215 Nm

### TECHNICAL FEATURES

Material	Aluminum alloy		
OIML R60 Accuracy class • Verification intervals	C3 • 3000		
Nominal load (E max)	1000 - 2000 kg		
Minimum verification interval (V min)	E max / 7000		
Combined error	≤ ±0.02%		
Protection rating	IP65		
Rated output	2 mV/V ±10%	Input resistance	406 Ω ±6
Temperature effect on zero	0.0017% °C	Output resistance	350 Ω ±3
Temperature effect on span	0.0014% °C	Zero balance	≤ ±1%
Compensated temperature range	-10 °C / +40 °C	Insulation resistance	≥5000 MΩ
Operating temperature range	-35 °C / +65 °C	Safe overload (% of full scale)	150%
Creep at nominal load in 30 minutes	0.02%	Ultimate overload (% of full scale)	300%
Max supply voltage without damage	18 V	Deflection at nominal load	0.8 mm

### ELECTRICAL CONNECTIONS

3 m
6 mm
6 x 0.20 mm <sup>2</sup>



The Company reserves the right to make changes to the technical data, drawings and images without notice.