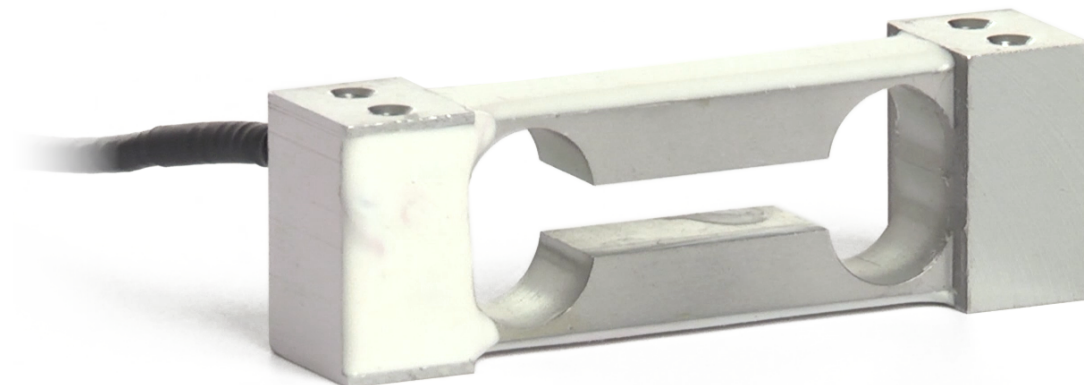




Manufactured according to OIML R60 standards

Capacity from 0.25 kg to 1 kg



- ALUMINUM ALLOY
- COMBINED ERROR  $\leq \pm 0.03\%$
- IP65 PROTECTION RATING

CAPACITY	kg	PLATFORM (mm)	NET WEIGHT (kg)
	0.25	200 x 200	0.1
	0.5	200 x 200	0.1
	1	200 x 200	0.1

### CERTIFICATIONS

**EAC** Complies with the Eurasian Customs Union regulations

**UK** Equivalent of the CE marking for the United Kingdom

#### CERTIFICATIONS ON REQUEST

Calibration report

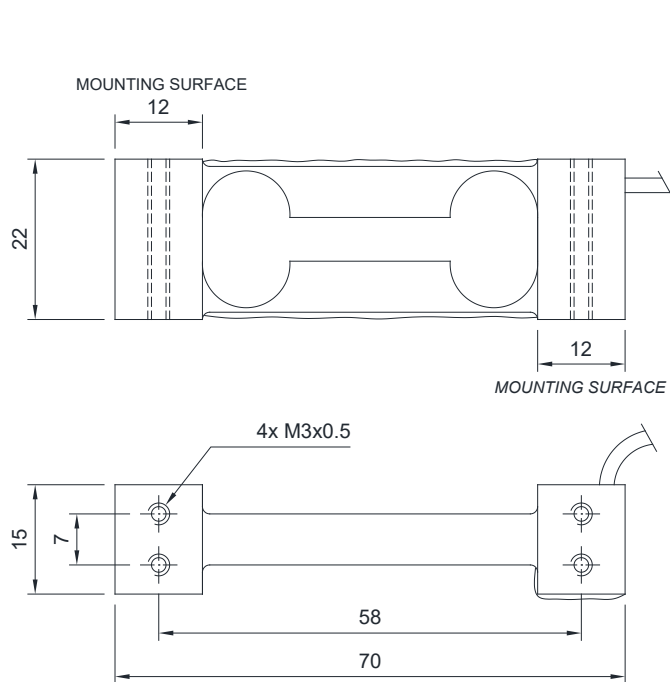
**Ex** ATEX (zone 2-22)

**EAC Ex** Complies with the Eurasian Customs Union regulations for use in potentially explosive atmospheres

**Ex NEPSA** Complies with Chinese market regulations for use in potentially explosive atmospheres

## SINGLE-POINT LOAD CELL for platforms 200x200 mm

### DIMENSIONS (mm)



For the load cell fixing screws, provide the tightening torque indicated in the table

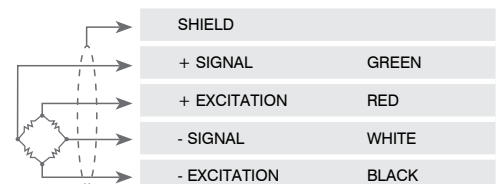
Screw	M3	
Screw class	6.8	8.8
Tightening torque	1 Nm	1.3 Nm

### TECHNICAL FEATURES

Material	Aluminum alloy		
Nominal load (E max)	0.25 - 0.50 - 1.00 kg		
Combined error	≤ ±0.03%		
Protection rating	IP65		
Rated output	1 mV/V ±20%	Input resistance	410 Ω ±10
Temperature effect on zero	0.0025% °C	Output resistance	350 Ω ±3
Temperature effect on span	0.0025% °C	Zero balance	±2%
Compensated temperature range	-10 °C / +40 °C	Insulation resistance	>2000 MΩ
Operating temperature range	-20 °C / +60 °C	Safe overload (% of full scale)	200%
Creep at nominal load in 30 minutes	0.03%	Ultimate overload (% of full scale)	400%
Max supply voltage without damage	15 V	Deflection at nominal load	0.3 mm

### ELECTRICAL CONNECTIONS

Cable length	3 m
Cable diameter	2.5 mm
Cores	4 x 0.20 mm <sup>2</sup>



The Company reserves the right to make changes to the technical data, drawings and images without notice.