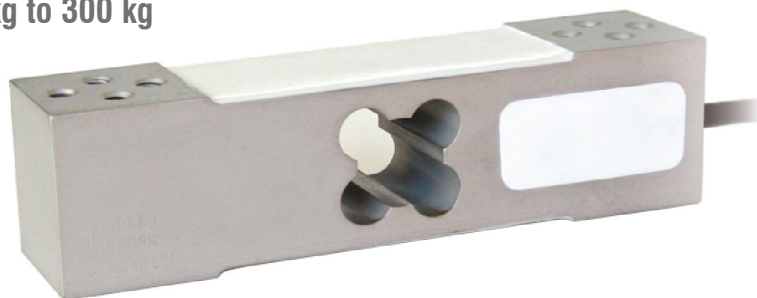


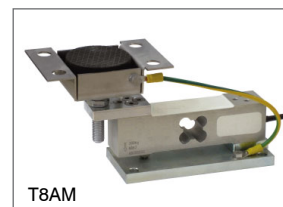
## SINGLE-POINT LOAD CELL for platforms 400x400 mm



Capacity from 60 kg to 300 kg



MOUNTING KIT



T8AM

Can be used for systems with at least 3 supports

- ALUMINUM ALLOY
- COMBINED ERROR  $\leq \pm 0.02\%$  (0.017% C4; 0.014% C5)
- IP65 PROTECTION RATING

CAPACITY	kg	ACCURACY CLASS					PLATFORM (mm)	NET WEIGHT (kg)
		C3	C4	C5				
60		•	•	–	•	•	400 x 400	0.6
100		•	•	–	•	•	400 x 400	0.6
150		•	•	–	•	•	400 x 400	0.6
200		•	•	–	•	•	400 x 400	0.6
300		•	•	•	•	•	400 x 400	0.6

ON REQUEST

## CERTIFICATIONS



OIML R60 C3



Complies with the Eurasian Customs Union regulations



Equivalent of the CE marking for the United Kingdom



Complies with United Kingdom regulations for legal for trade use

## CERTIFICATIONS ON REQUEST

Calibration report



ATEX II 1G 2D (zone 0-1-2-21-22) (CE - UKCA)



IECEx (zone 0-1-2-20-21-22)



OIML R60 C4/C5



Complies with the Eurasian Customs Union regulations for use in potentially explosive atmospheres



Complies with Chinese market regulations for use in potentially explosive atmospheres



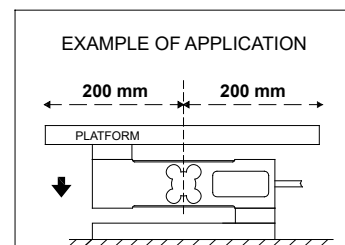
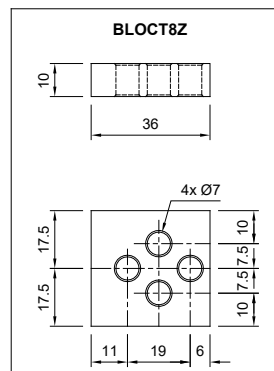
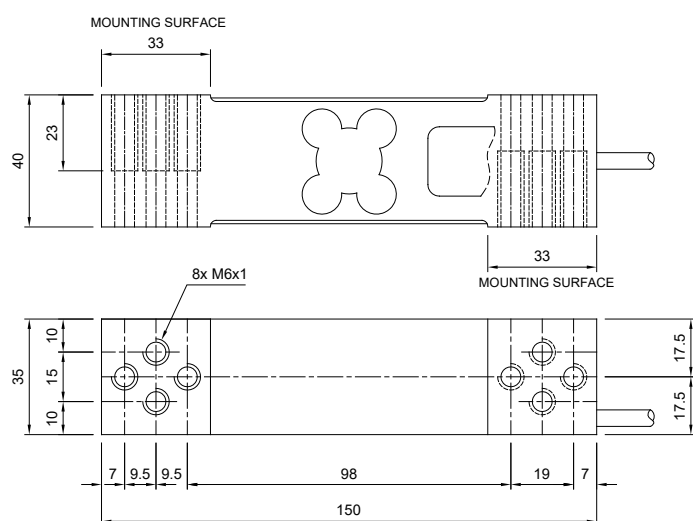
NTEP - Complies with United States regulations for legal for trade use

## COMPLEMENTARY ACCESSORIES

	DESCRIPTION	CODE
	Stainless steel and rubber waterproof kit.	IP68AM
	Galvanized steel drawn block.	BLOCT8Z

## SINGLE-POINT LOAD CELL for platforms 400x400 mm

## DIMENSIONS (mm)



For the load cell fixing screws, provide the tightening torque indicated in the table

Screw	M6	
Screw class	6.8	8.8
Tightening torque	7.5 Nm	10 Nm

## TECHNICAL FEATURES

Material		Aluminum alloy		
OIML R60 Accuracy class • Verification intervals		C3 • 3000	C4 • 4000	C5 • 5000
Nominal load (E max)		60 - 100 - 150 - 200 - 300 kg		300 kg
Minimum verification interval (V min)		E max / 10000	E max / 15000	E max / 20000
Combined error		≤ ±0.02%	≤ ±0.017%	≤ ±0.014%
Protection rating		IP65		
Rated output	2 mV/V ±10%	Input resistance	406 Ω ±6	
Temperature effect on zero	0.003% °C	Output resistance	350 Ω ±3	
Temperature effect on span	0.002% °C	Zero balance	≤ ±2%	
Compensated temperature range	-10 °C / +40 °C	Insulation resistance	≥5000 MΩ	
Operating temperature range	-35 °C / +65 °C	Safe overload (% of full scale)	150%	
Creep at nominal load in 30 minutes	0.025%	Ultimate overload (% of full scale)	300%	
Max supply voltage without damage	18 V	Deflection at nominal load	0.5 mm	

## ELECTRICAL CONNECTIONS

Cable length	3 m
Cable diameter	5 mm
Cores	4 x 0.20 mm²



SHIELD	
+ SIGNAL	GREEN
+ EXCITATION	RED
- SIGNAL	WHITE
- EXCITATION	BLACK