



Manufactured according to OIML R60 standards

Capacity from 30000 kg to 100000 kg



Capacity 250000 kg



- 17-4 PH STAINLESS STEEL
- HOLES FOR STANDARD SHACKLES
- COMBINED ERROR $\leq \pm 0.08\%$
- IP67 - IP68 PROTECTION RATING

CAPACITY	kg	NET WEIGHT (kg)
	30000	11
	40000	11
	50000	11
	60000	11
	100000	22
	250000	64

CERTIFICATIONS

EAC Complies with the Eurasian Customs Union regulations

UK Equivalent of the CE marking for the United Kingdom

CERTIFICATIONS ON REQUEST

Calibration report

Ex ATEX II 1G 2D (zone 0-1-2-21-22) (CE - UK - CA)

IECEx (zone 0-1-2-20-21-22)

EAC Ex Complies with the Eurasian Customs Union regulations for use in potentially explosive atmospheres

Ex-NEPSY Complies with Chinese market regulations for use in potentially explosive atmospheres

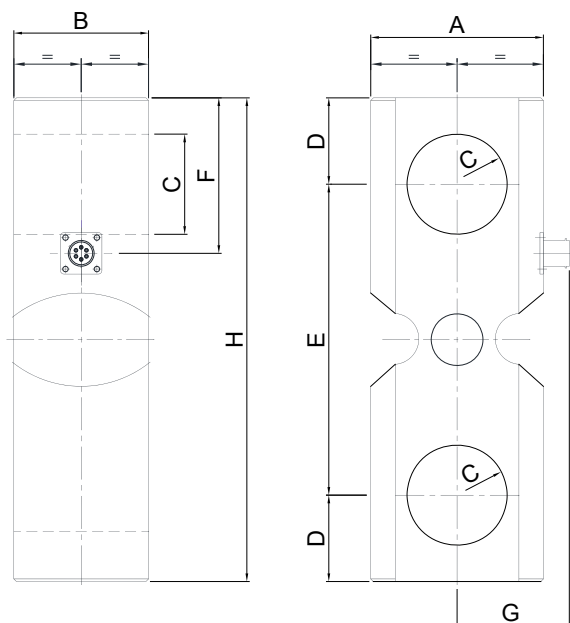
OPTIONS ON REQUEST

DESCRIPTION



Two redundant strain gauges Wheatstone bridges (350 Ω) with two output cables; for dual safety systems.

DIMENSIONS (mm)



	kg 30000 kg 40000 kg 50000 kg 60000	kg 100000	kg 250000
A	100	127	240
B	78	88	110
C	Ø 58	Ø 71	Ø 102
D	50	70	120
E	180	200	360
F	90	120	185
G	65	68	136
H	280	340	600

TECHNICAL FEATURES

Material	17-4 PH stainless steel		
Nominal load (E max)	30000 - 40000 - 50000 - 60000 - 100000 - 250000 kg		
Combined error	±0.08%		
Protection rating	IP68 (30000 - 100000 kg), IP67 (250000 kg)		
Rated output	1.0 mV/V ±0.1%	Input resistance	350 Ω ±20
Temperature effect on zero	0.005% °C	Output resistance	350 Ω ±5
Temperature effect on span	0.005% °C	Zero balance	±1%
Compensated temperature range	-20 °C / +70 °C	Insulation resistance	>5000 MΩ
Operating temperature range	-30 °C / +90 °C	Safe overload (% of full scale)	150%
Creep at nominal load in 30 minutes	0.03%	Ultimate overload (% of full scale)	300%
Max supply voltage without damage	15 V	Deflection at nominal load	0.3 mm

ELECTRICAL CONNECTIONS

Cable length	10 m
Cable diameter	6 mm
Cores	6 x 0.14 mm ²

