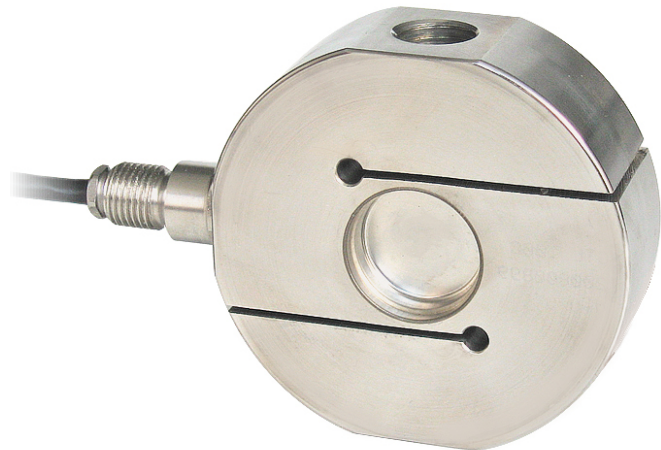




Capacity from 100 kg to 12500 kg

- 17-4 PH STAINLESS STEEL
- COMBINED ERROR $\leq \pm 0.02\%$
- IP68 PROTECTION RATING



CAPACITY	kg	ACCURACY CLASS C3		NET WEIGHT (kg)
100		–	–	0.7
200		–	–	0.7
300		–	–	0.7
500		•	•	1.4
1000		•	•	1.4
2500		•	•	1.4
5000		•	•	2.6
7500		•	•	2.7
10000		•	•	3.7
12500		•	•	4.8

ON REQUEST

CERTIFICATIONS

- OIML R60 C3
- Complies with the Eurasian Customs Union regulations
- Equivalent of the CE marking for the United Kingdom

CERTIFICATIONS ON REQUEST



Declaration of conformity + IP69K marking protection rating
 Water protection in case of high-pressure or steam jet cleaning (test: pressurized water is sprayed from a distance of max 150 mm)
 Water pressure: 100 bar; temperature: 80 °C; test duration: 250 seconds (reference standard: DIN 40050-9)

Calibration report

LAT Accredia calibration certificate ISO 376 or ASTM E74 for capacities from 1000 kg to 10000 kg



ATEX (zone 2-22)



ATEX/IECEx (zone 1-21)



Complies with the Eurasian Customs Union regulations for use in potentially explosive atmospheres



Complies with Chinese market regulations for use in potentially explosive atmospheres

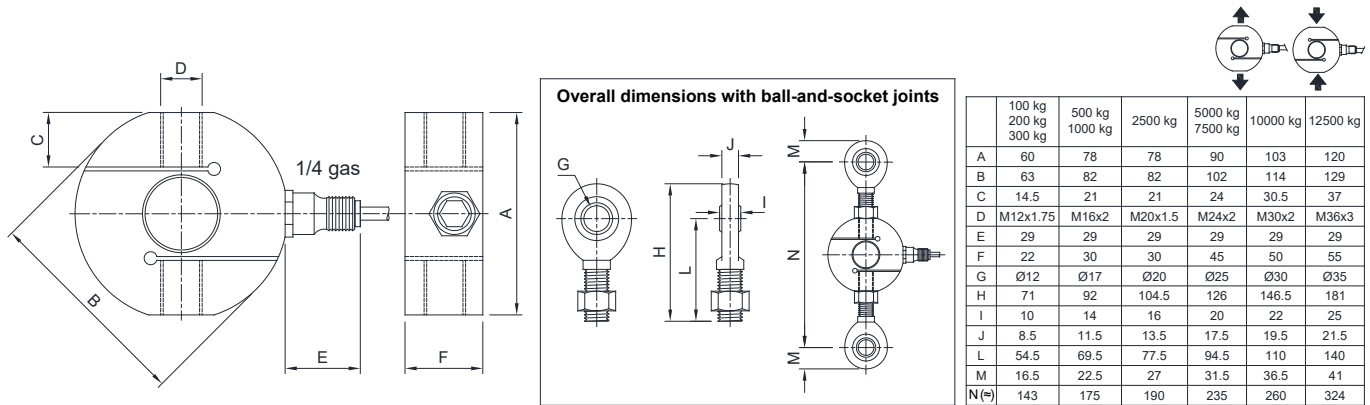


Complies with the regulations of the Russian Federation for legal for trade use



Complies with Chinese market regulations for legal for trade use

DIMENSIONS (mm)



OPTIONS ON REQUEST

DESCRIPTION



Two redundant strain gauges Wheatstone bridges (350 Ω) with two output cables; for dual safety systems.

COMPLEMENTARY ACCESSORIES

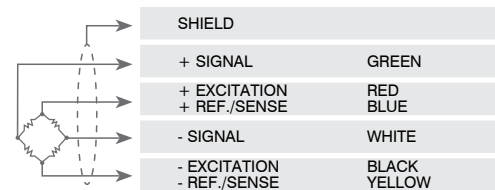
	DESCRIPTION	DIMENSIONS	LOAD CELL CAPACITY	CODE
	Ball-and-socket joint with nut:			
	stainless steel	M12x1.75	100-300 kg	EM-INOX
		M16x2	500-1000 kg	
		M20x1.5	2500 kg	
		M24x2	5000-7500 kg	
	galvanized C40 steel	M12x1.75	100-300 kg	EM
		M16x2	500-1000 kg	
		M20x1.5	2500 kg	
		M24x2	5000-7500 kg	
		M30x2	10000 kg	
M36x3		12500 kg		

TECHNICAL FEATURES

Material	17-4 PH stainless steel		
OIML R60 Accuracy class • Verification intervals	-		C3 • 3000
Nominal load (E max)	100 - 200 - 300 kg	500 - 1000 - 2500 - 5000 kg 7500 - 10000 - 12500 kg	
Minimum verification interval (V min)	E max / 10000		
Combined error	≤ ±0.02%		
Protection rating	IP68		
Rated output	2 mV/V ±0.1%	Input resistance	350 Ω ±5
Temperature effect on zero	0.005% °C	Output resistance	350 Ω ±2
Temperature effect on span	0.003% °C	Zero balance	±1%
Temperature range OIML R60	-10 °C / +40 °C	Insulation resistance	≥5000 MΩ
Compensated temperature range	-20 °C / +70 °C	Safe overload (% of full scale)	150%
Operating temperature range	-30 °C / +90 °C	Ultimate overload (% of full scale)	300%
Creep at nominal load in 30 minutes	0.05%	Deflection at nominal load	0.3 mm
Max supply voltage without damage	15 V		

ELECTRICAL CONNECTIONS

Cable length	10 m
Cable diameter	5 mm
Cores	6 x 0.14 mm ²



The Company reserves the right to make changes to the technical data, drawings and images without notice.