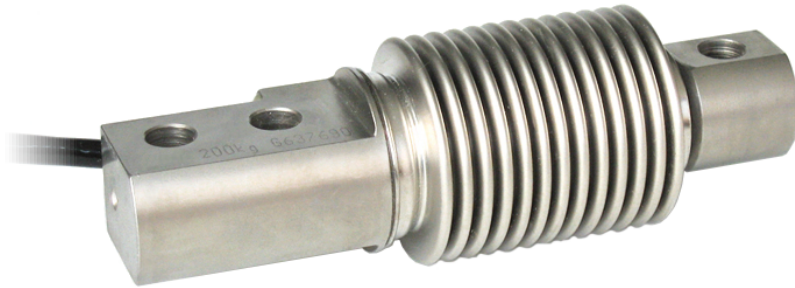


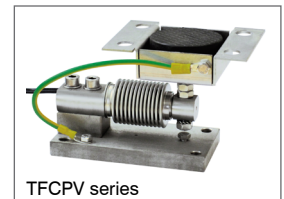


Capacity from 20 kg to 500 kg

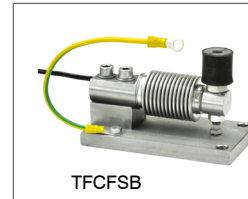


- 17-4 PH STAINLESS STEEL
- COMBINED ERROR  $\leq \pm 0.02\%$  (0.017% C4)
- IP68 PROTECTION RATING

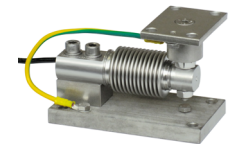
### MOUNTING KITS



TFCPV series



TFCFSB



TFCGP

| CAPACITY | kg | ACCURACY CLASS |    |   | NET WEIGHT (kg) |
|----------|----|----------------|----|---|-----------------|
|          |    | C3             | C4 |   |                 |
| 20       |    | •              | •  | — | 0.4             |
| 50       |    | •              | •  | • | 0.4             |
| 100      |    | •              | •  | • | 0.4             |
| 200      |    | •              | •  | • | 0.4             |
| 350      |    | •              | •  | • | 0.4             |
| 500      |    | •              | •  | • | 0.4             |

ON REQUEST

### CERTIFICATIONS

- OIML R60 C3
- Complies with the Eurasian Customs Union regulations
- Equivalent of the CE marking for the United Kingdom

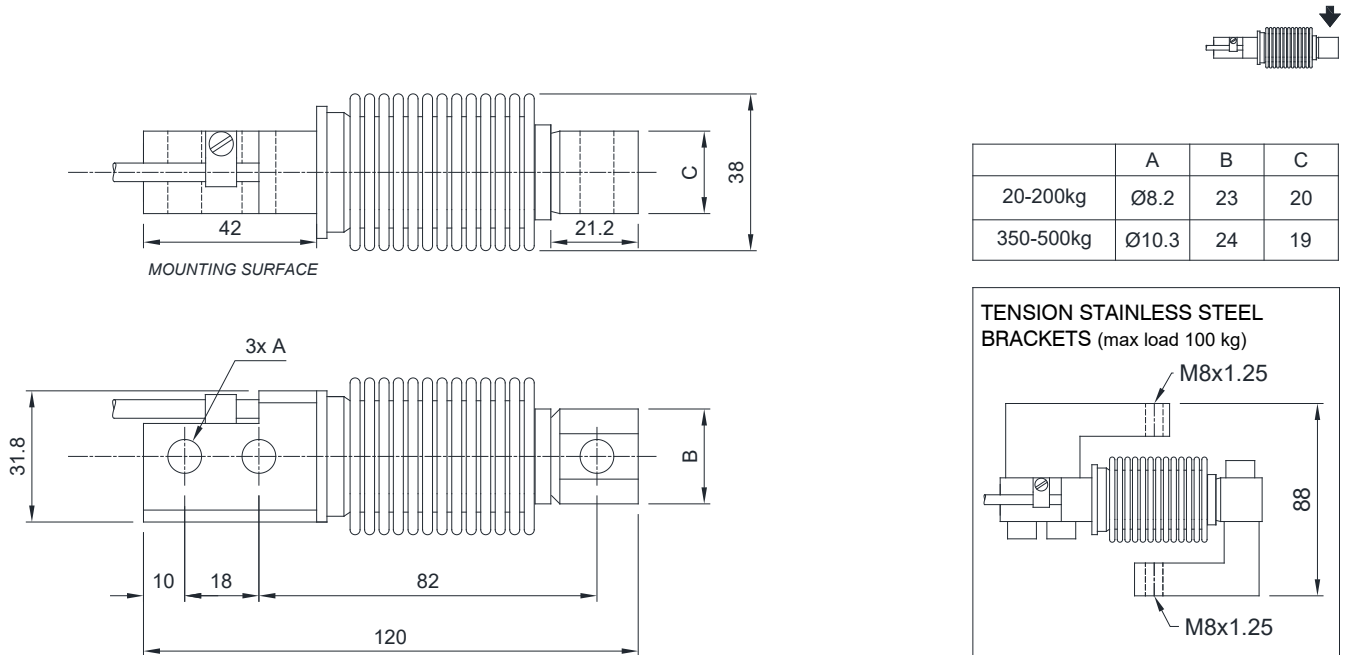
#### CERTIFICATIONS ON REQUEST

|  |   |
|--|---|
|  | Calibration report  |
|  | ATEX (zone 2-22)  |
|  | ATEX/IECEx (zone 1-21)  |
|  | OIML R60 C4   |
|  | Complies with the Eurasian Customs Union regulations for use in potentially explosive atmospheres               |
|  | FM HazLoc - Complies with the United States and Canada regulations for use in potentially explosive atmospheres |
|  | Complies with Chinese market regulations for use in potentially explosive atmospheres                           |
|  | NTEP - Complies with United States regulations for legal for trade use  |

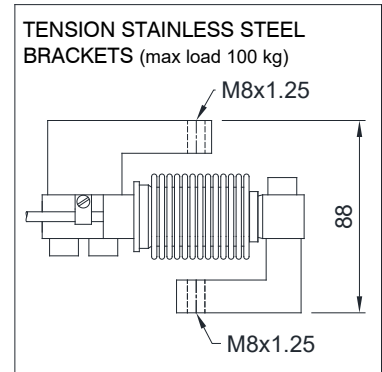
### COMPLEMENTARY ACCESSORIES

|  | DESCRIPTION  | CODE     |
|--|--|----------|
|  | Pair of tension stainless steel brackets.<br>Maximum static load: 100 kg | STAFFEFC |

### DIMENSIONS (mm)



|           | A     | B  | C  |
|-----------|-------|----|----|
| 20-200kg  | Ø8.2  | 23 | 20 |
| 350-500kg | Ø10.3 | 24 | 19 |



For the load cell fixing screws, provide the tightening torque indicated in the table

| Screw             | M8    |       | M10   |       |
|-------------------|-------|-------|-------|-------|
|                   | 6.8   | 8.8   | 6.8   | 8.8   |
| Tightening torque | 19 Nm | 25 Nm | 37 Nm | 50 Nm |

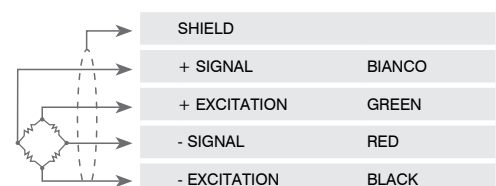
### TECHNICAL FEATURES

|  |                                    |                                     |             |
|--|------------------------------------|-------------------------------------|-------------|
| Material   | 17-4 PH stainless steel            |                                     |             |
| OIML R60 Accuracy class • Verification intervals | C3 • 3000                          | C4 • 4000                           |             |
| Nominal load (E max)                             | 20 - 50 - 100 - 200 - 350 - 500 kg |                                     |             |
| Minimum verification interval (V min)            | E max / 10000                      | E max / 15000                       |             |
| Combined error                                   | ≤ ±0.02%                           | ≤ ±0.017%                           |             |
| Protection rating                                | IP68                               |                                     |             |
| Rated output                                     | 2 mV/V ± 1% *                      | Input resistance                    | 460 Ω ± 50  |
| Temperature effect on zero                       | 0.002% °C                          | Output resistance                   | 350 Ω ± 3.5 |
| Temperature effect on span                       | 0.0014% °C                         | Zero balance                        | ≤ ±1%       |
| Compensated temperature range                    | -10 °C / +40 °C                    | Insulation resistance               | ≥ 5000 MΩ   |
| Operating temperature range                      | -35 °C / +65 °C                    | Safe overload (% of full scale)     | 150%        |
| Creep at nominal load in 30 minutes              | 0.02%                              | Ultimate overload (% of full scale) | 300%        |
| Max supply voltage without damage                | 18 V                               | Deflection at nominal load          | 0.4 mm      |

\* Calibrated current output

### ELECTRICAL CONNECTIONS

|                |                          |
|----------------|--------------------------|
| Cable length   | 3 m                      |
| Cable diameter | 5 mm                     |
| Cores          | 4 x 0.22 mm <sup>2</sup> |



The Company reserves the right to make changes to the technical data, drawings and images without notice.