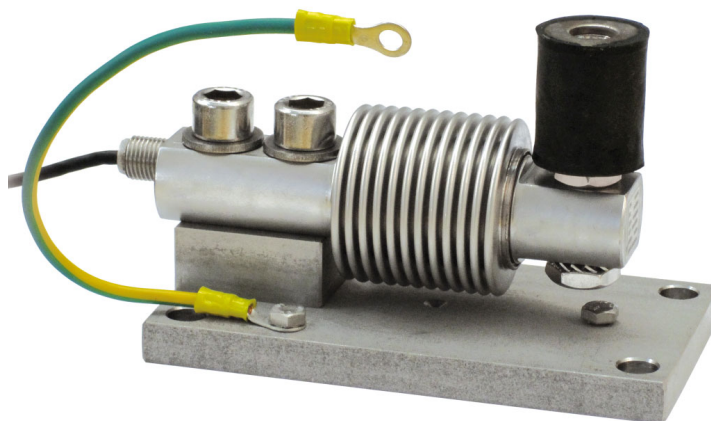


Series load cells: **FCAL - FCAX**

Up to 500 kg application range



MAX STATIC LOAD	kg	FOR LOAD CELLS	NET WEIGHT (kg)	CODE
	500	FCAL - FCAX	1.5	TFFSB

Load cell not included

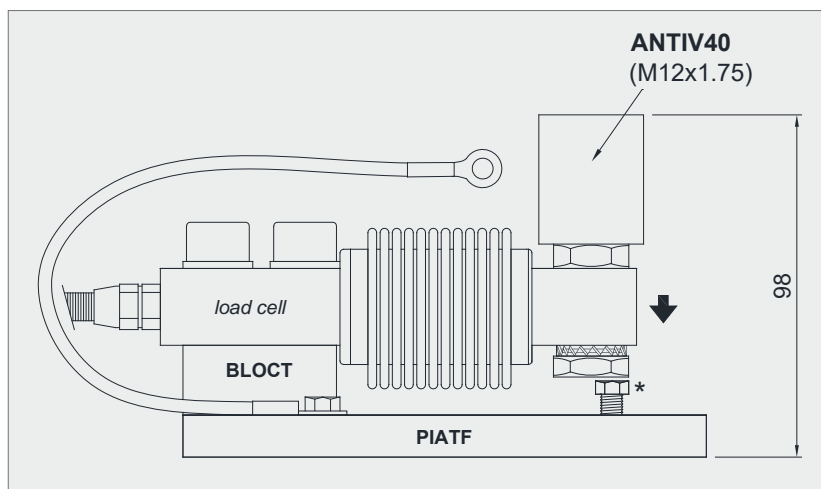
DESCRIPTION

- Compression joint in AISI 304 stainless steel and rubber.
- Lower plate and block in AISI 304 stainless steel.
- Compensation for any misalignments of the support plates of the structure.
- Locking screw to avoid damage during transport and installation.
- Can be used for systems with at least 3 supports.

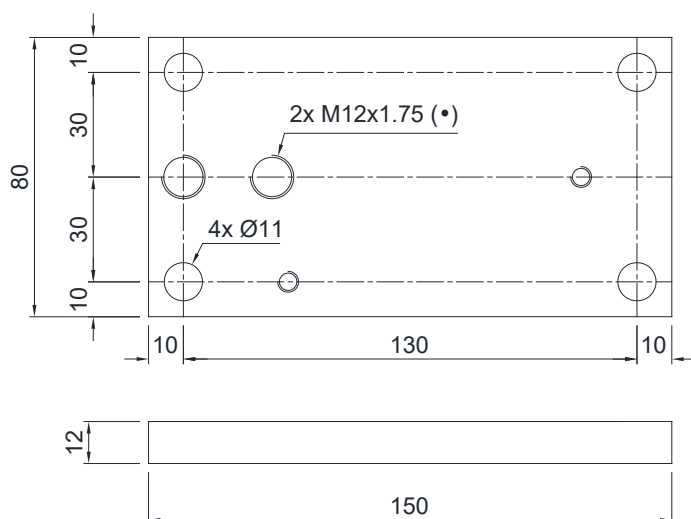
MOUNTING KIT for BENDING BEAM load cells

DIMENSIONS AND TECHNICAL SPECIFICATIONS

- During the transport and installation the lock (*) must touch under the load cell. After installation, move the lock away from the load cell.
- Connect the structure to be weighed by means of copper wire, then connect all the lower plates to the earthing system.
- In case of structure with four-point support, if one-point does not touch the upper part of the mounting kit, you must proceed to insert a shim before fixing the bolts.
- For the load cell fixing screws (*), provide a tightening torque of 50 Nm.



PIATF



BLOCT

