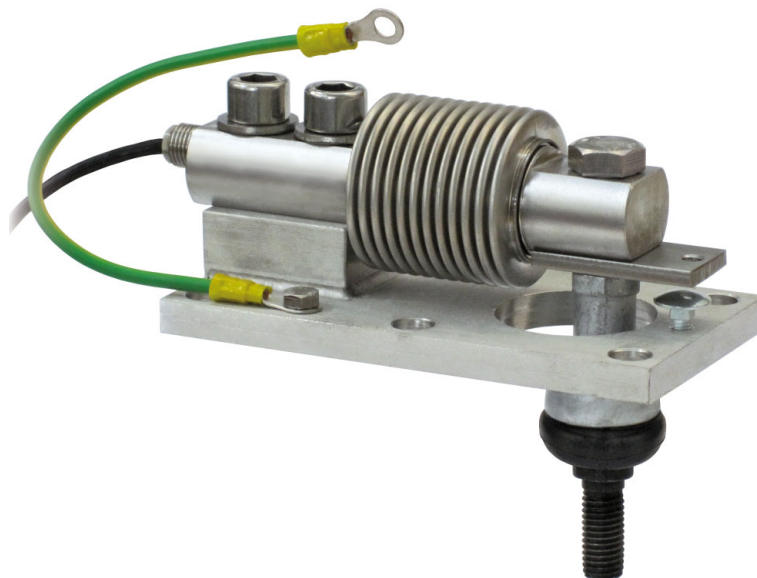


Series load cells: **FCAL - FCAX**

Up to 500 kg application range



MAX STATIC LOAD	kg	FOR LOAD CELLS	NET WEIGHT (kg)	CODE
	<b>500</b>	<b>FCAL - FCAX</b>	<b>1.5</b>	<b>TFAST</b>

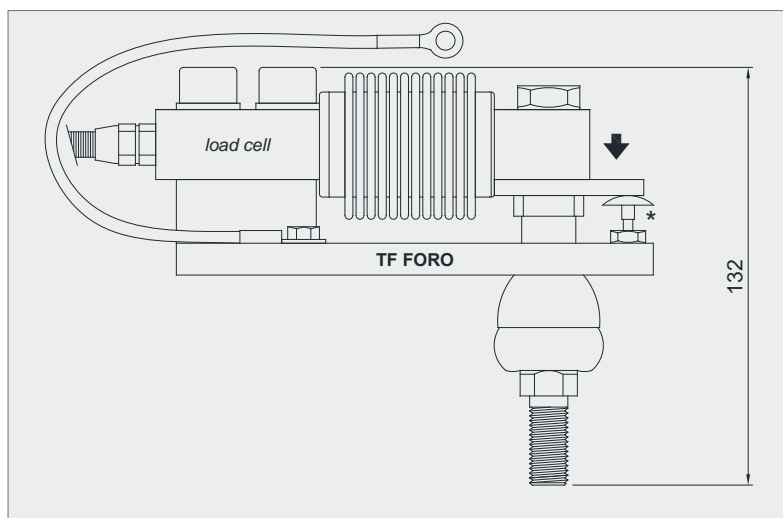
*Load cell not included*

### DESCRIPTION

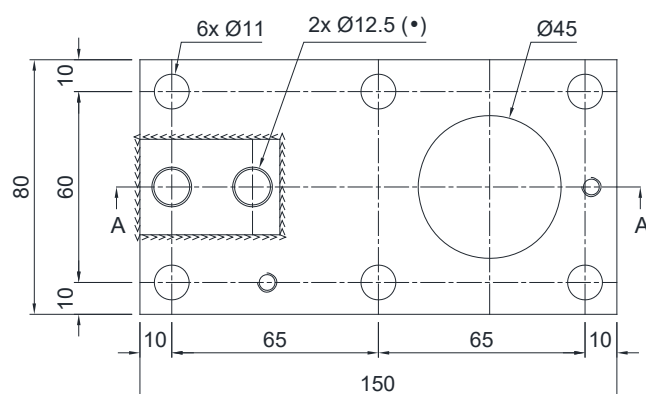
- Aluminum alloy tension ball joint.
- AISI 304 stainless steel lower plate.
- Locking screw to avoid damage during transport and installation.

### DIMENSIONS AND TECHNICAL SPECIFICATIONS

- During the transport and installation the lock (\*) must touch under the load cell. After installation, move the lock away from the load cell.
- Connect the structure to be weighed by means of copper wire, then connect all the lower plates to the earthing system.
- For the load cell fixing screws (\*), provide a tightening torque of 79 Nm.



TF FORO



Tension ball joint

