

Per celle di carico a FLESSIONE e TAGLIO

Range di applicazione fino a 5000 kg

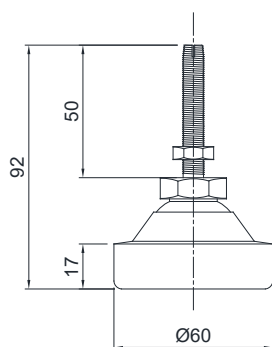


CARICO MASSIMO STATICO	kg	FILETTATURA	DIMENSIONI	MATERIALE	PESO NETTO (kg)	SERIE
500		M8	Ø60 x H 92 mm	acciaio inox	0.3	SB2
500		M10	Ø60 x H 92 mm		0.3	SB2
2000		M12	Ø60 x H 92 mm		0.4	SB2
5000		M20	Ø80 x H 105 mm		0.9	SB2
2000		M12	Ø60 x H 78 mm	acciaio inox	0.4	PXC
2000		M12	Ø62 x H 86 mm	acciaio zincato	0.4	SB2
5000		M20	Ø62 x H 110 mm		0.9	SB2
2000		M12	Ø60 x H 78 mm	acciaio zincato	0.4	PXC

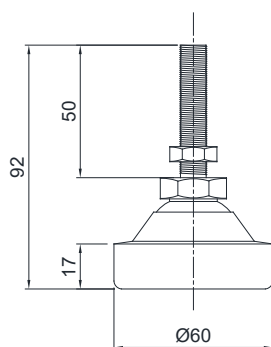
Dadi e rondelle inclusi.

### DIMENSIONI E APPLICAZIONE

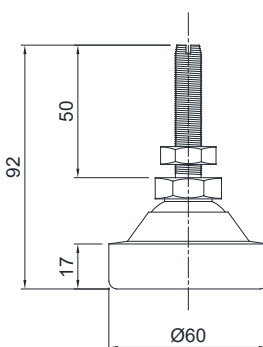
**SB2 - acciaio inox**  
M8x1.25



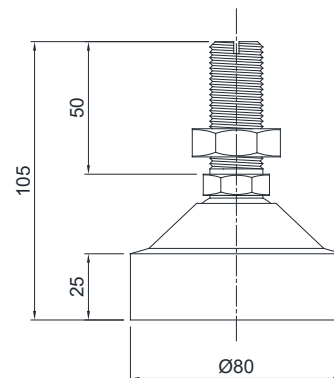
**SB2 - acciaio inox**  
M10x1.5



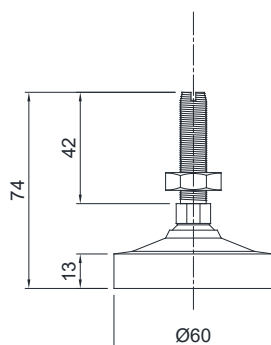
**SB2 - acciaio inox**  
M12x1.75



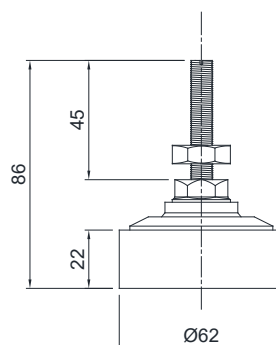
**SB2 - acciaio inox**  
M20x2.5



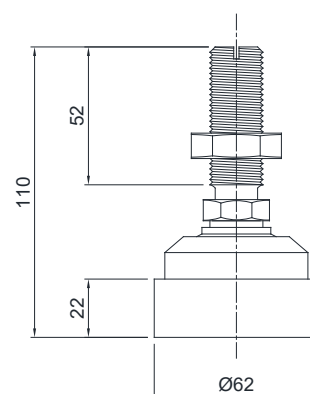
**PXC - acciaio inox/  
acciaio zincato**  
M12x1.75



**SB2 - acciaio zincato**  
M12x1.75



**SB2 - acciaio zincato**  
M20x2.5



### ESEMPIO DI APPLICAZIONE

