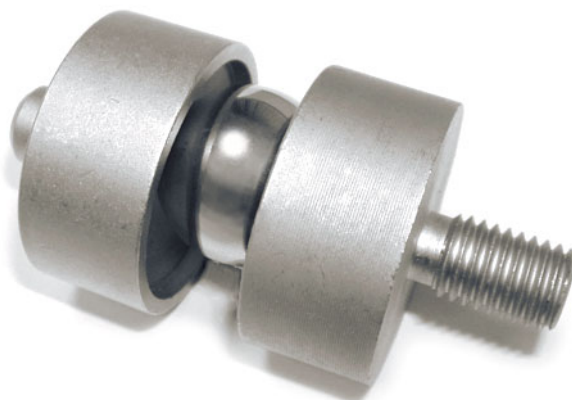
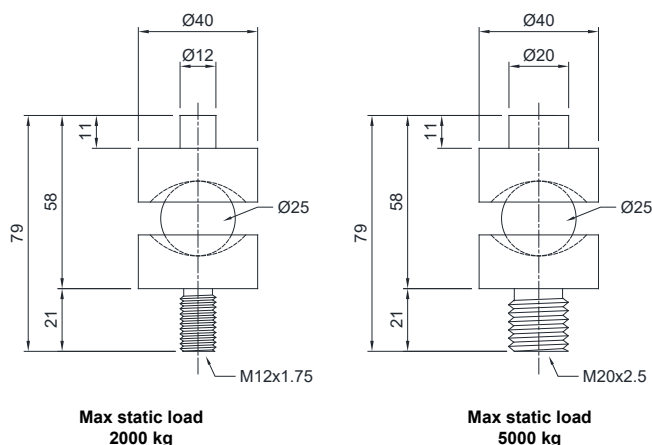


Up to 5000 kg application range



MAX STATIC LOAD	kg	FOR LOAD CELLS	DIMENSIONS	NET WEIGHT (kg)
2000		FTK - FT-P - FTKL FTZ - FTP - CLS	M12x1.75	0.3
5000		FTK - FTKL - FTZ (5000 kg) FTP (3000-5000 kg) - CLS (5000 kg)	M20x2.5	0.4

DIMENSIONS AND APPLICATION

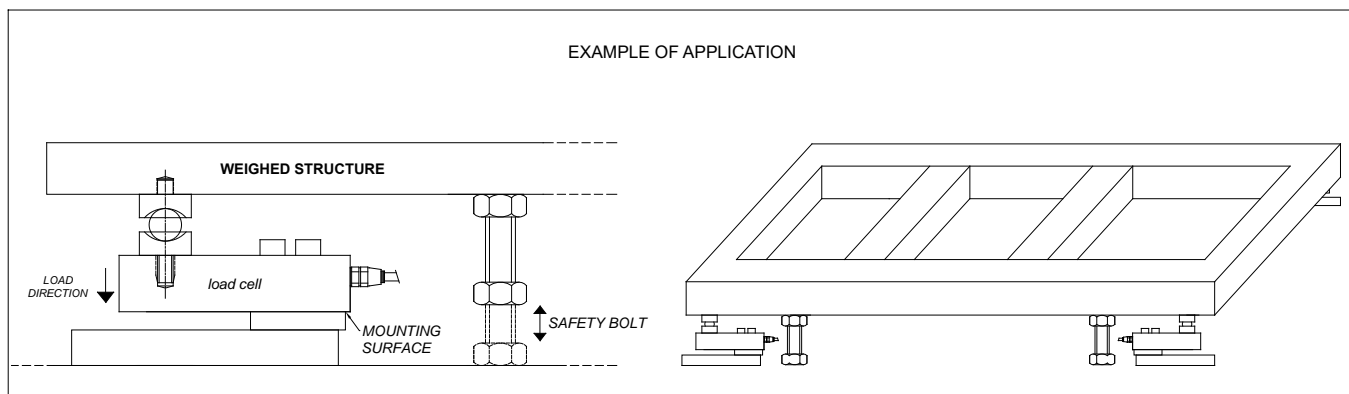


DESCRIPTION

- Stainless steel accessory with ball to compensate for misalignment of the support plates.



EXAMPLE OF APPLICATION



The Company reserves the right to make changes to the technical data, drawings and images without notice.