

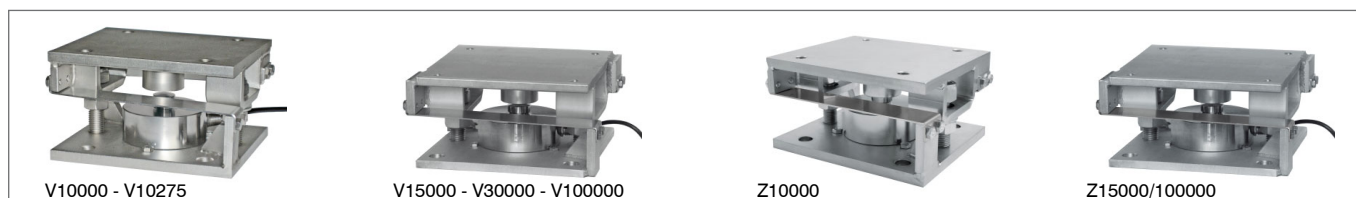


Capacity from 1000 kg to 30000 kg

- AISI 420 STAINLESS STEEL
- COMBINED ERROR $\leq \pm 0.05\%$
- IP68 PROTECTION RATING



MOUNTING KITS



CAPACITY	kg	NET WEIGHT (kg)	CODE
1000		1.1	CX1000L
2500		1.1	CX2500L
5000		1.1	CX5000L
7500		1.1	CX7500L
10000		1.1	CX10000L
15000		1.4	CX15000L
30000		2.2	CX30000L

CERTIFICATIONS



Complies with the Eurasian Customs Union regulations



Equivalent of the CE marking for the United Kingdom

CERTIFICATIONS ON REQUEST



Declaration of conformity + IP69K marking protection rating

Water protection in case of high-pressure or steam jet cleaning (test: pressurized water is sprayed from a distance of max 150 mm)
Water pressure: 100 bar; temperature: 80 °C; test duration: 250 seconds (reference standard: DIN 40050-9)

Calibration report

LAT Accredia calibration certificate ISO 376 or ASTM E74 for capacities from 1000 kg to 10000 kg



ATEX II 1G 2D (zone 0-1-2-21-22) (CE - UKCA)



IECEx (zone 0-1-2-20-21-22)



Complies with the Eurasian Customs Union regulations for use in potentially explosive atmospheres



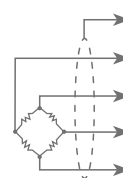
Complies with Chinese market regulations for use in potentially explosive atmospheres

TECHNICAL FEATURES

Material	AISI 420 stainless steel		
Nominal load (E max)	1000, 2500, 5000, 7500, 10000, 15000, 30000 kg		
Combined error	$\leq \pm 0.05\%$		
Protection rating	IP68		
Rated output	2 mV/V $\pm 0.4\%$	Input resistance	765 $\Omega \pm 15$
Temperature effect on zero	0.002% $^{\circ}\text{C}$	Output resistance	700 $\Omega \pm 5$
Temperature effect on span	0.002% $^{\circ}\text{C}$	Zero balance	$\pm 2\%$
Compensated temperature range	-10 $^{\circ}\text{C}$ / +50 $^{\circ}\text{C}$	Insulation resistance	>5000 M Ω
Operating temperature range	-20 $^{\circ}\text{C}$ / +60 $^{\circ}\text{C}$	Safe overload (% of full scale)	150%
Creep at nominal load in 30 minutes	0.02%	Ultimate overload (% of full scale)	300%
Max supply voltage without damage	15 V	Deflection at nominal load	0.4 mm

ELECTRICAL CONNECTIONS

Cable length	10 m
Cable diameter	5 mm
Cores	6 x 0.25 mm ²



SHIELD

+ SIGNAL

GREEN

+ EXCITATION
+ REF./SENSE

RED
BLUE






- SIGNAL

WHITE

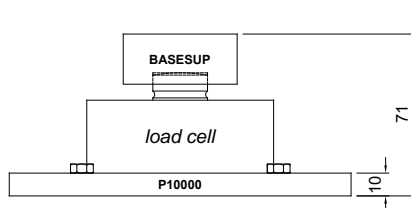
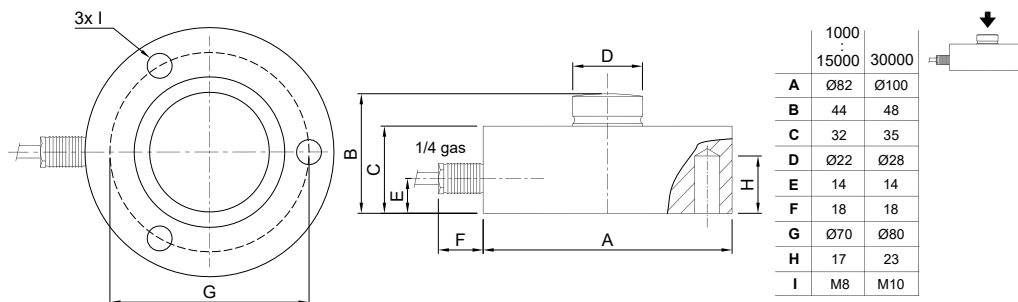
- EXCITATION
- REF./SENSE

BLACK
YELLOW

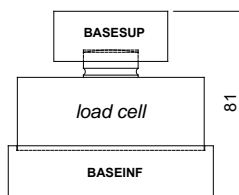
COMPLEMENTARY ACCESSORIES

	DESCRIPTION		CODE
	AISI 304 stainless steel threaded upper base for compression load cells.	M12x1.75 mm	BASESUPFIL
	AISI 304 stainless steel turned lower base for compression load cells.	Ø110x22 mm	BINF100
	Lower plate and turned upper base in AISI 304 stainless steel. Load cell capacity: up to 15000 kg.		BASESUP P10000
	Turned upper and lower bases in AISI 304 stainless steel. Load cell capacity: up to 15000 kg.		BASESUP BASEINF
	Lower plate and turned lower base in AISI 304 stainless steel. Load cell capacity: up to 15000 kg.		BASEINF PIASTRA200

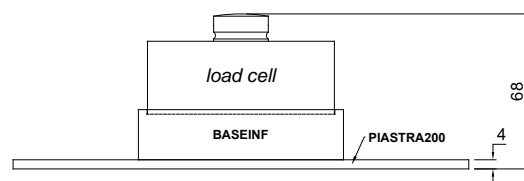
DIMENSIONS (mm)



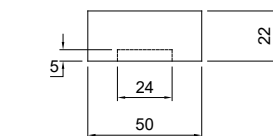
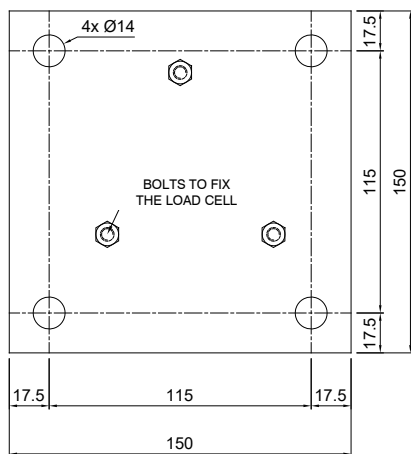
P10000



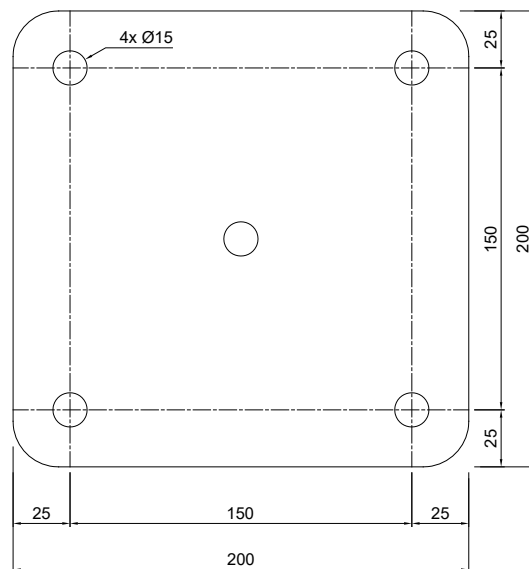
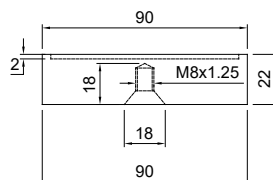
BASESUP



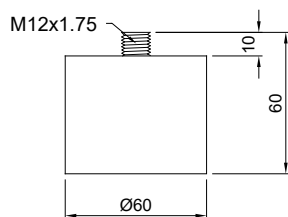
PIASTRA200



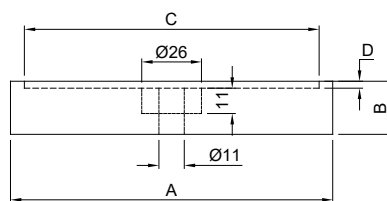
BASEINF



BASESUPFIL



BINF



	A	B	C	D
BINF100	Ø110	22	Ø102	2