



Up to 20000 kg application range



| MAX STATIC LOAD | kg | THREAD | DIMENSIONS | MATERIAL | NET WEIGHT (kg) |
|-----------------|----|--------|-----------------|-----------------|-----------------|
| 2000 | | M12 | Ø120 x H 101 mm | stainless steel | 0.3 |
| 5000 | | M16 | Ø120 x H 101 mm | | 0.3 |
| 5000 | | M20 | Ø120 x H 101 mm | | 0.4 |
| 10000 | | M24 | Ø120 x H 97 mm | | 0.4 |
| 10000 | | M30 | Ø120 x H 97 mm | | 0.9 |
| 20000 | | M36 | Ø120 x H 97 mm | | 0.4 |

On request: pluggable hygienic foot, with holes for fixing to the floor.

For other types of hygienic or customized feet, please contact <https://martinlevelling.it>

CERTIFICATIONS



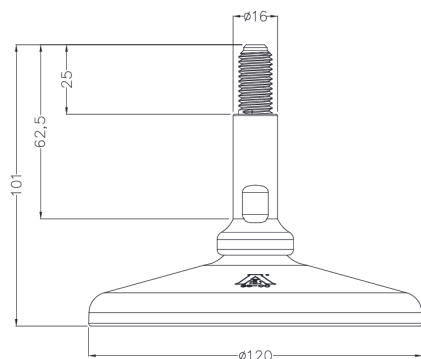
Equivalent of the CE marking for the United Kingdom



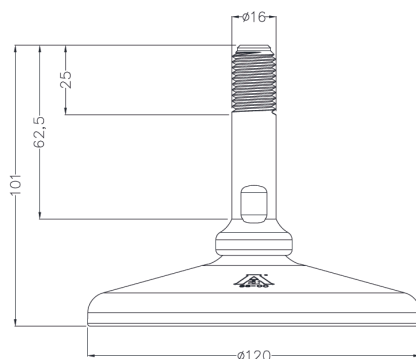
American standard that regulates the design, production and use of hygienic equipment

DIMENSIONS AND APPLICATION

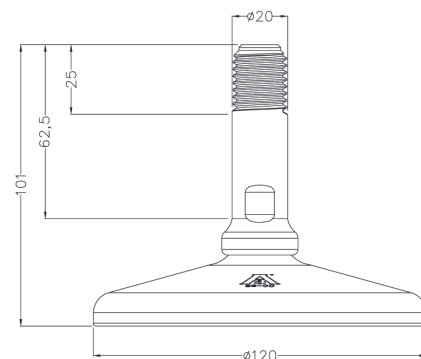
2000 kg
M12 x 1.75



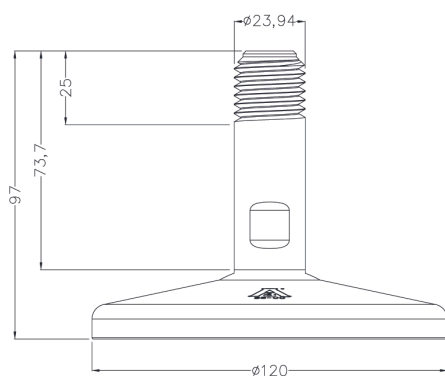
5000 kg
M16 x 2



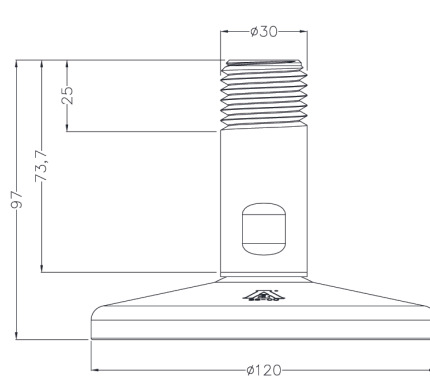
5000 kg
M20 x 2.5



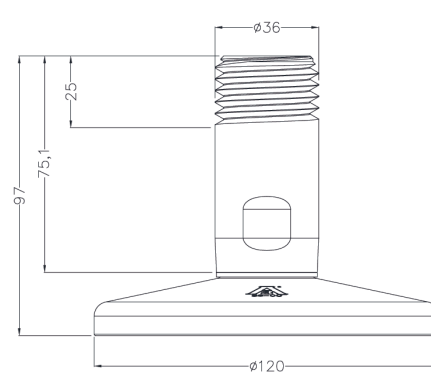
10000 kg
M24 x 3



10000 kg
M30 x 3.5



20000 kg
M36 x 4



EXAMPLE OF APPLICATION

