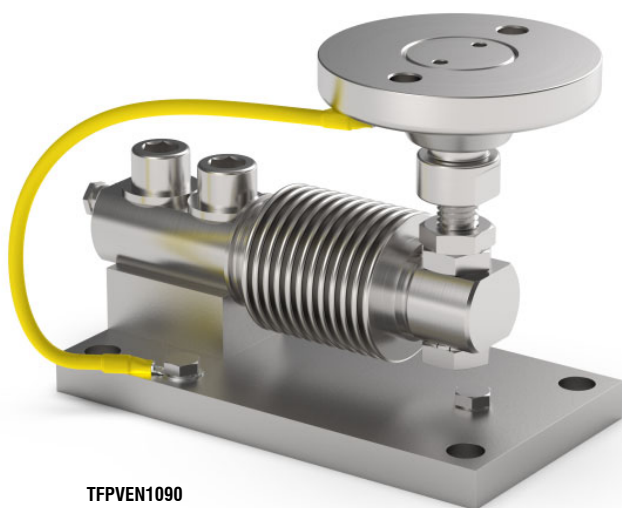


Series load cells: FCAL - FCAX

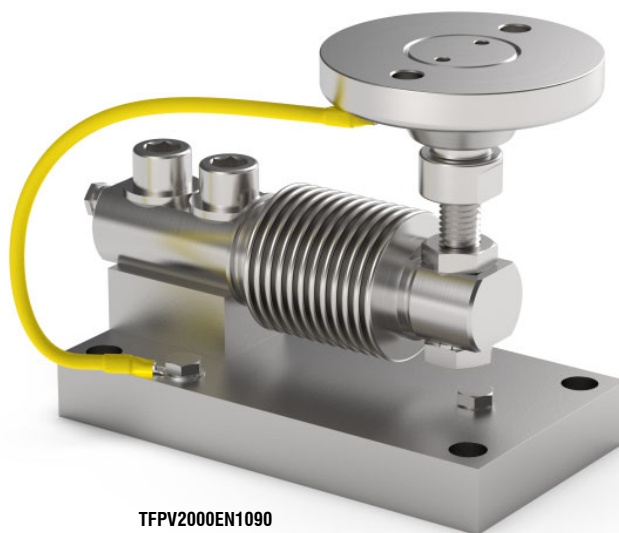


Up to 1500 kg application range

Certification EN1090



TFPVEN1090



TFPV2000EN1090

MAX STATIC LOAD	kg	FOR LOAD CELLS	NET WEIGHT (kg)	CODE
500		FCAL - FCAX	2	TFPVEN1090
1500		FCAX	2	TFPV2000EN1090

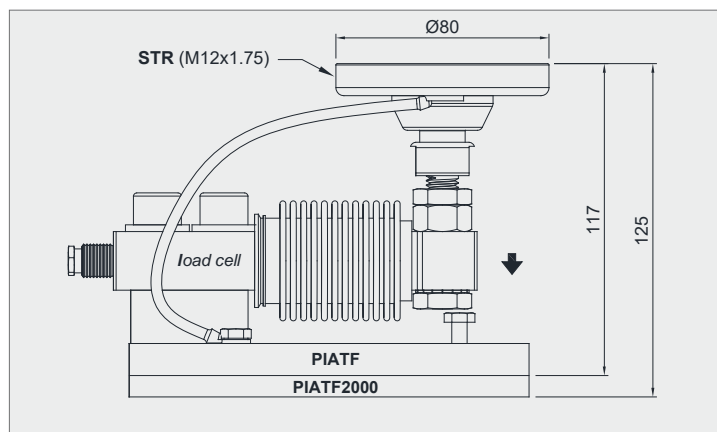
Load cell not included.

DESCRIPTION

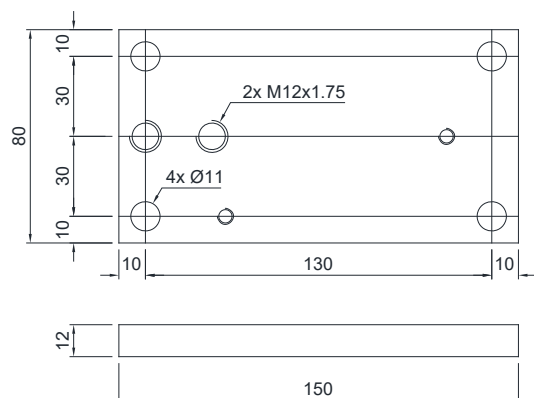
- Constraint against lateral forces and anti-tilt by AISI 304 stainless steel self-centering joint foot.
- Lower plate and block in AISI 304 stainless steel.
- Compensation for any misalignments of the support plates of the structure.
- Partial height adjustment.
- Locking screw to avoid damage during transport and installation.

DIMENSIONS AND TECHNICAL SPECIFICATIONS

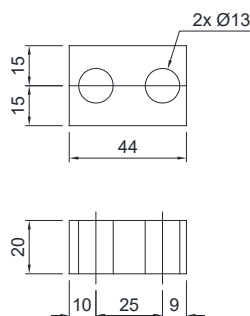
- During the transport and installation the lock (*) must touch under the load cell. After installation, move the lock away from the load cell.
- Interconnect the plates to the earthing.
- In case of structure with four-point support, if one-point does not touch the upper part of the mounting kit, you must proceed to insert a shim before fixing the bolts.



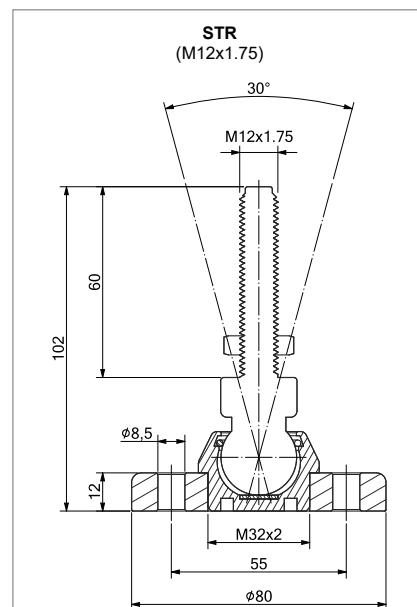
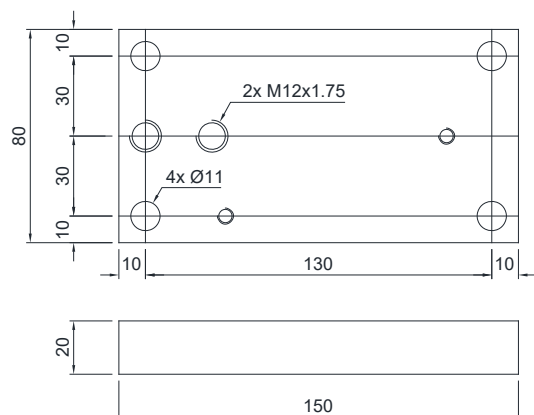
PIATF



BLOCT



PIATF2000



FIXING TO THE WEIGHED STRUCTURE

