

PVCLSEN1090

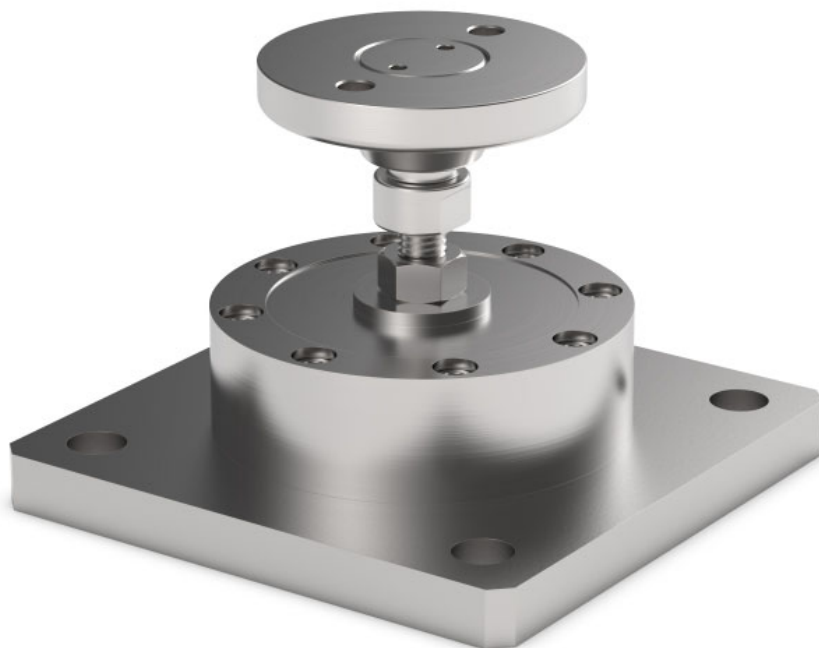
MOUNTING KIT for COMPRESSION - LOW PROFILE load cells

LAUMAS®

Series load cells: CLS



Up to 2000 kg application range
Certification EN1090



MAX STATIC LOAD	kg	FOR LOAD CELLS	NET WEIGHT (kg)	CODE
2000		CLS (1000 - 2000 kg)	0.6	PVCLSEN1090

Load cell not included.

DESCRIPTION

- Constraint against lateral forces and anti-tilt by AISI 304 stainless steel self-centering joint foot.
- Compensation for any misalignments of the support plates of the structure.
- Adjustable height.

DIMENSIONS AND TECHNICAL SPECIFICATIONS

- Finished the installation by means of a copper wire, connect the upper supporting plate with the lower supporting plate, then connect all the lower plates to the earthing system.
- In case of structure with four-point support, if one-point does not touch the support base of the foot, you must proceed to adjust foot height.

