

PV80EN1090

MOUNTING KIT for SHEAR BEAM load cells

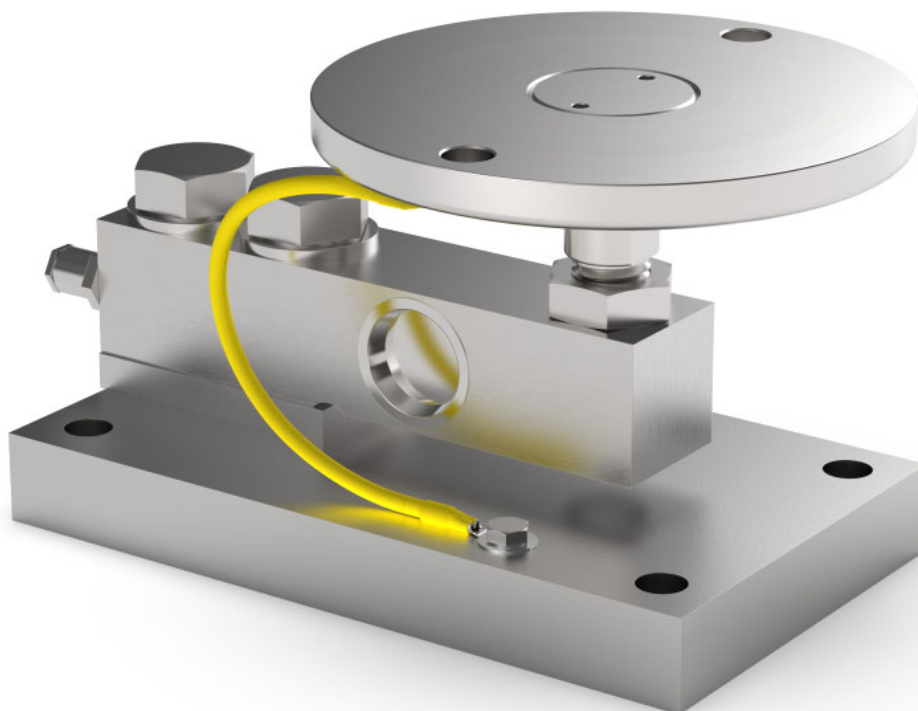
LAUMAS®

Series load cells: FTP - FTZ



Up to 5000 kg application range

Certification EN1090



MAX STATIC LOAD	kg	FOR LOAD CELLS	NET WEIGHT (kg)	CODE
	5000	FTP - FTZ	6.9	PV80EN1090

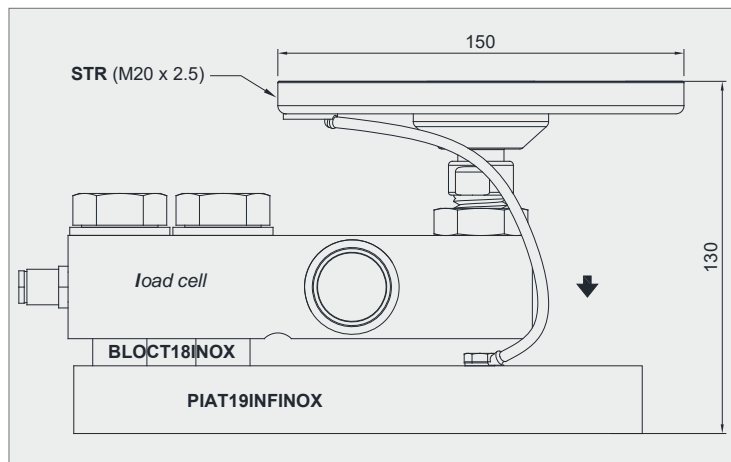
Load cell not included.

DESCRIPTION

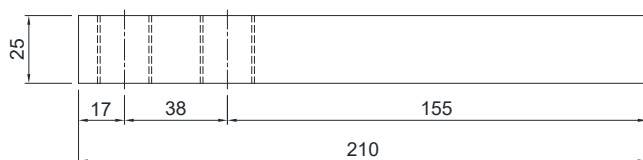
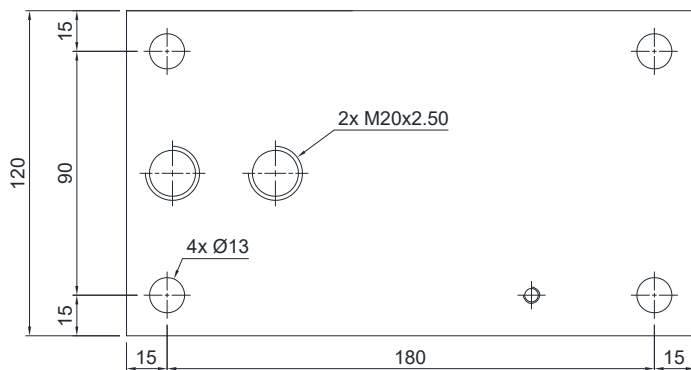
- Constraint against lateral forces and anti-tilt by AISI 304 stainless steel self-centering joint foot.
- Lower plate and block in AISI 304 stainless steel.
- Compensation for any misalignments of the support plates of the structure.
- Adjustable height.
- Locking screw to avoid damage during transport and installation.

DIMENSIONS AND TECHNICAL SPECIFICATIONS

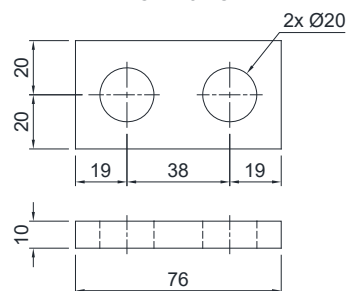
- Interconnect the plates to the earthing.
- In case of structure with four-point support, if one-point does not touch the upper part of the mounting kit, you must proceed to insert a shim before fixing the bolts.



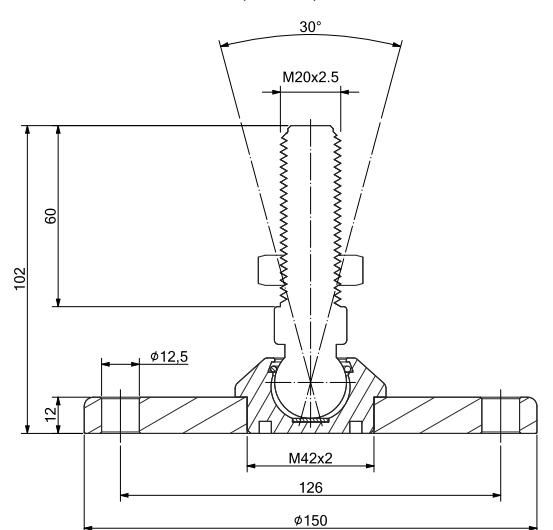
PIAT19INFINOX



BLOCT18INOX



STR
(M20x2.5)



FIXING TO THE WEIGHED STRUCTURE

