

PV80CLSEN1090

MOUNTING KIT for COMPRESSION - LOW PROFILE load cells

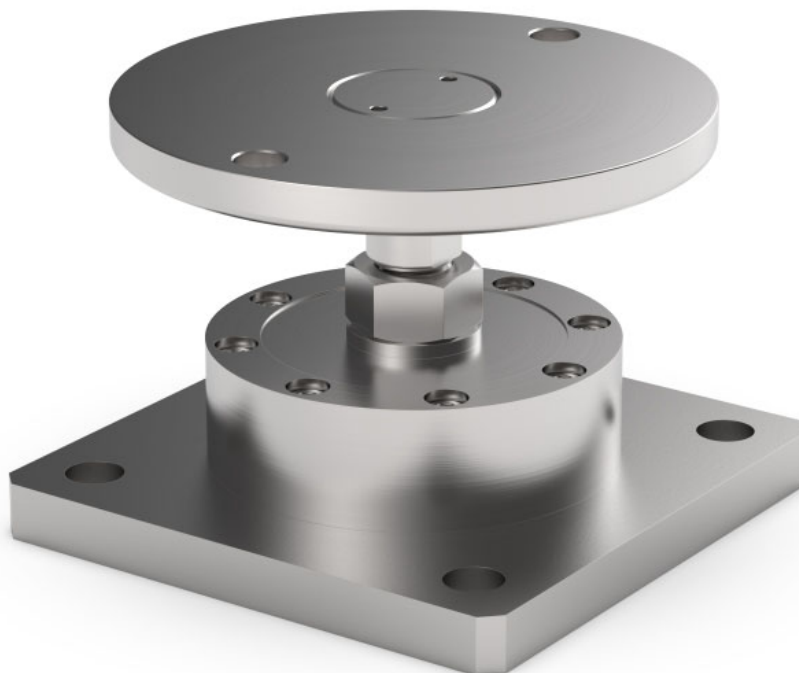
LAUMAS®

Series load cells: CLS



Up to 5000 kg application range

Certification EN1090



| MAX STATIC LOAD | kg | FOR LOAD CELLS | NET WEIGHT (kg) | CODE |
|-----------------|------|----------------|-----------------|---------------|
| | 5000 | CLS (5000 kg) | 1.5 | PV80CLSEN1090 |

Load cell not included.

DESCRIPTION

- Constraint against lateral forces and anti-tilt by AISI 304 stainless steel self-centering joint foot.
- Compensation for any misalignments of the support plates of the structure.
- Adjustable height.

DIMENSIONS AND TECHNICAL SPECIFICATIONS

- Finished the installation by means of a copper wire, connect the upper supporting plate with the lower supporting plate, then connect all the lower plates to the earthing system.
- In case of structure with four-point support, if one-point does not touch the support base of the foot, you must proceed to adjust foot height.

