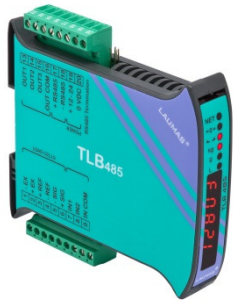


INSTRUMENT MANAGER



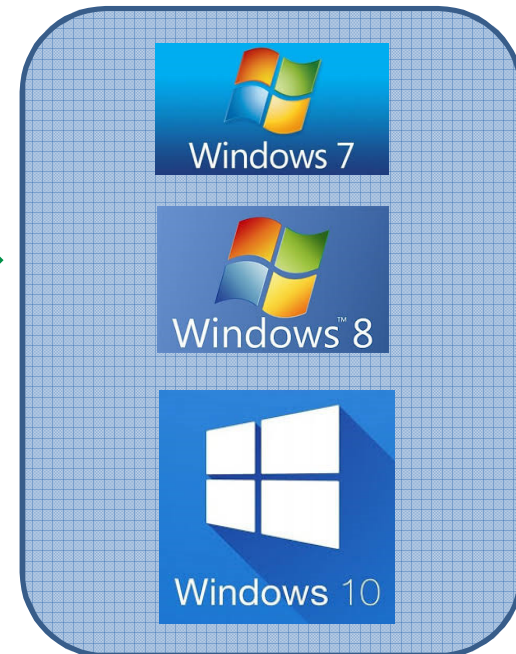
Technical Webinar

Matteo Grisanti

Parma, December 5th 2019

LAUMAS[®]
ELETTRONICA

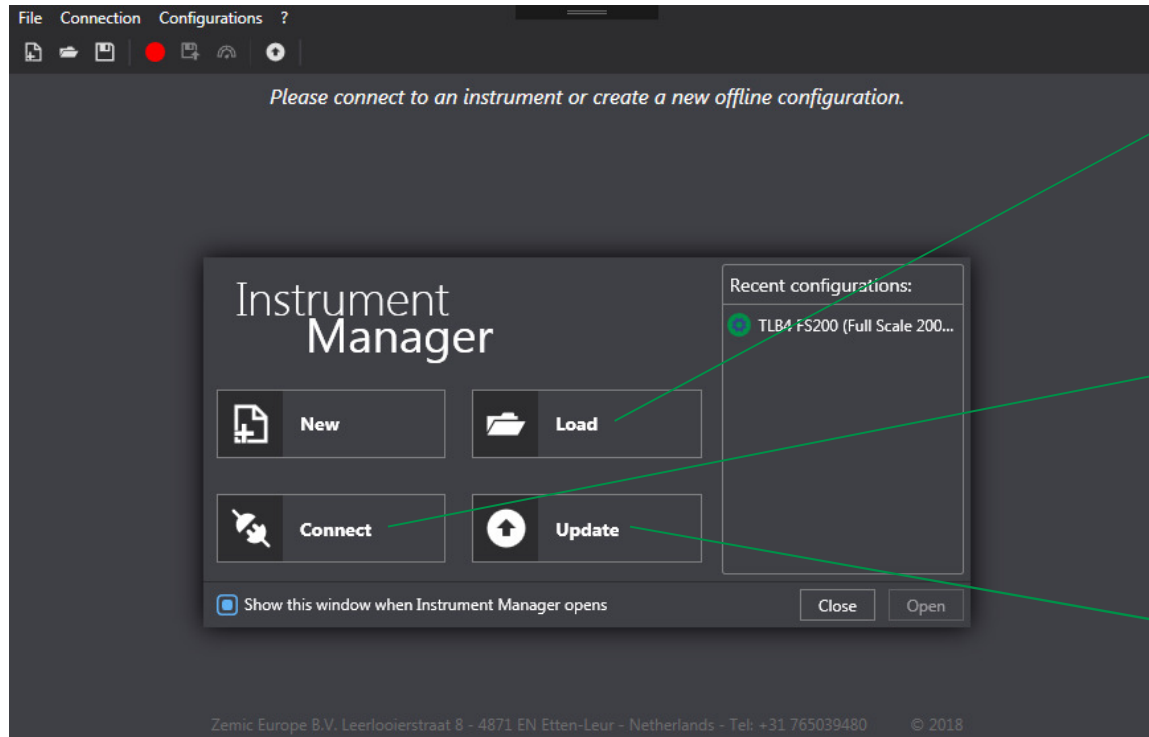
SYSTEM REQUIREMENTS



HW REQUIREMENTS:

- availability of a physical serial port
- Use of a USB to RS485 or USB to RS232 converter

MAIN FEATURES



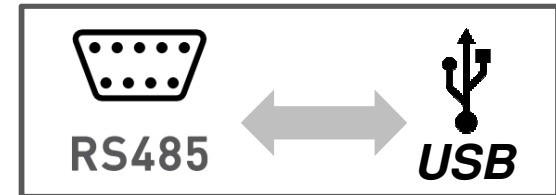
Configurations

Live Monitoring

Firmware Update

LAUMAS®
ELETTRONICA

FIRMWARE UPDATE



Port	Instrument
COM4	TLB4



Automatic new firmware detection

Instrument	Version	Model	Serial Number
TLB4	2.00.00	TLB4 RS485	633999999

Refresh Start!

Manual firmware update

Firmware Update
Updating... Please do not close Instrument Manager or disconnect the instrument.

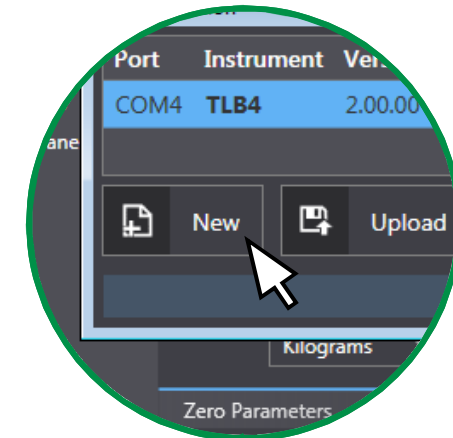
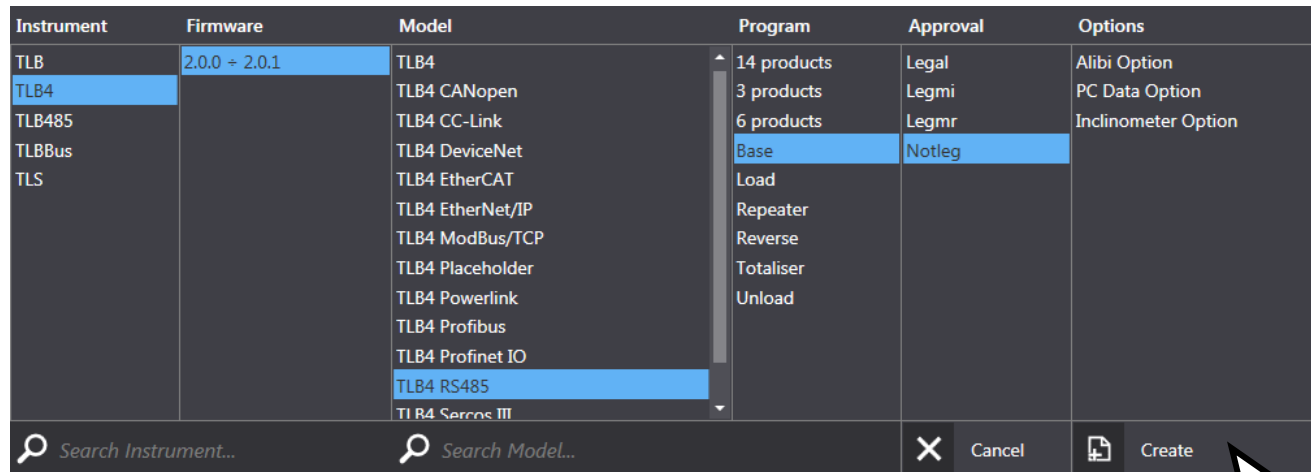
5%

Sending Packet 25 of 492 Data Rate 9.14 kB/s Elapsed 0:04 s Remaining 0:52 s

The guided procedure helps the user going through the firmware update. The only required action is to restart the instrument in boot mode.



CONFIGURATION: CREATE A NEW ONE



Create a configuration without connecting any instrument

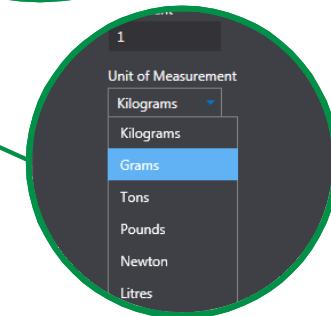
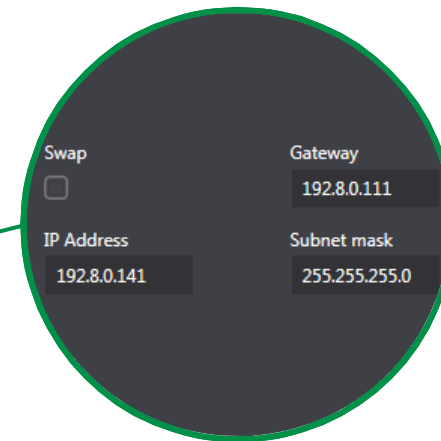
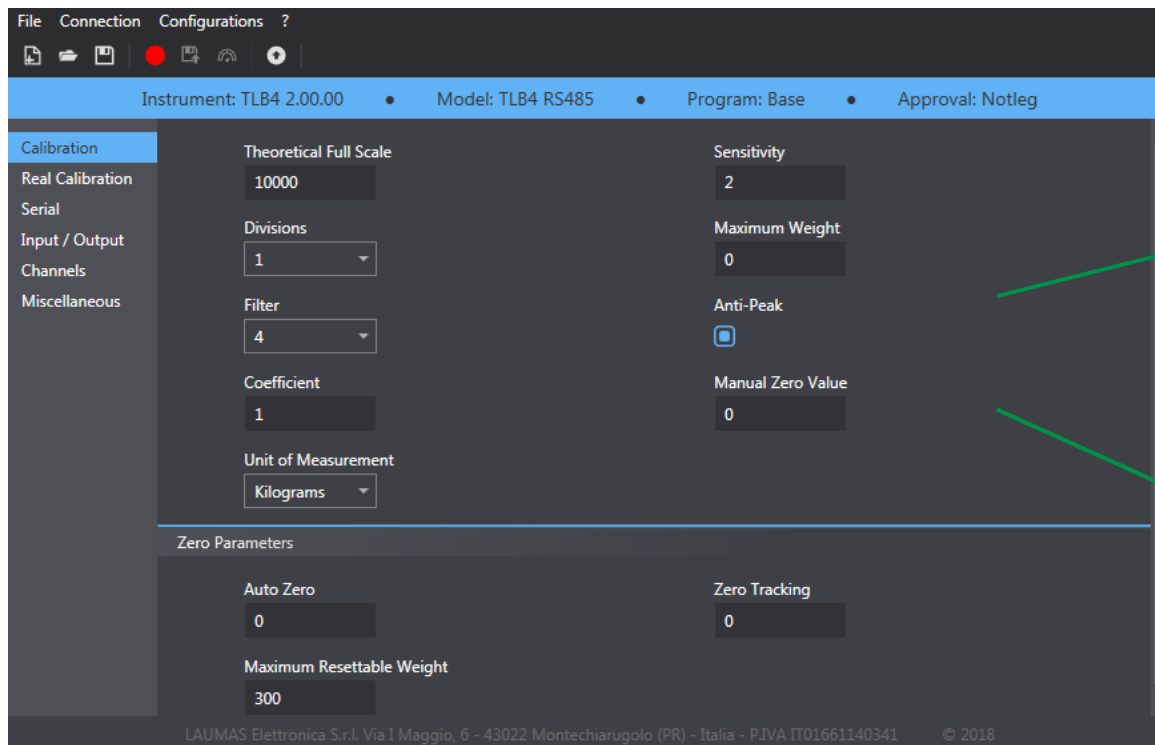
Automatically select every value from a connected instrument

It will be possible to upload a configuration only to an instrument with the same parameters.

CONFIGURATION: EDITING

Work **without** connected instruments.

Easily edit every parameter via Instrument Manager.



CONFIGURATION: LEGAL FOR TRADE INSTRUMENTS

For legal instrument, some parameters will be locked.
To edit and store those parameters, an authentication is needed

The screenshot displays the configuration software interface for a legal instrument. The top status bar indicates: Instrument: TLB4 2.00.00 • Model: TLB4 RS485 • Program: Base • Approval: Legal. The left sidebar lists configuration categories: Calibration, Real Calibration, Serial, Input / Output Channels, and Miscellaneous. The main area shows various parameters, many of which are locked with a padlock icon:

- Theoretical Full Scale:** 10000
- Divisions:** 1
- Filter:** 4
- Coefficient:** 1
- G Usage:** 0
- Unit of Measurement:** Kilograms
- Sensitivity:** 2
- Maximum Weight:** 0
- Anti-Peak:**
- G Calibration:** 9.80427
- Unit of Measurement Coeff:** Pounds

At the bottom, the **Zero Parameters** section shows **Auto Zero** and **Zero Tracking** both set to 0. An authentication dialog box is overlaid on the right, titled "Insert authentication credentials." It displays "Seed: 292" and a key icon. The dialog contains two input fields: "User" with the value "1" and "Password" with the value "1234". A mouse cursor is pointing at the key icon.

LAUMAS Elettronica S.r.l. Via I Maggio, 6 - 43022 Montechianugolo (PR) - Italia - P.IVA IT01661140341 © 2018

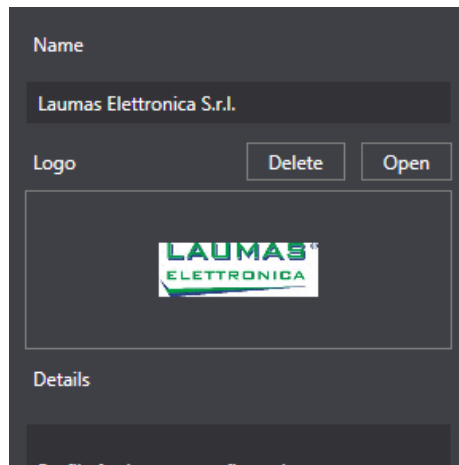
CONFIGURATION: UPLOAD/DOWNLOAD

Upload to the instrument












Download to the computer

CONFIGURATION: STORING

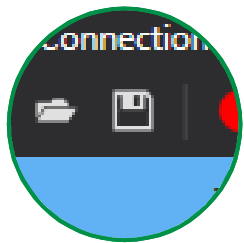


- Multiple profiles for dividing up personal configurations
- Filter configuration in order to find everything quickly
- A profile can represent a client or simply a logical folder

A screenshot of a "Client Profiles" table. The table has a dark background and a "New Profile" button with a plus icon. The table columns are "Logo", "Name", and "Details". Each row includes a logo, the company name, a description, and two icons (a document and a trash can).

Logo	Name	Details		
	Laumas Elettronica S.r.l.	Profile for Laumas configurations		
	Barilla Group S.p.A.	Configuration for Barilla		
	Ferrero S.p.A.			

CONFIGURATION: FURTHER FUNCTIONS



Profile

Laumas Elettronica S.r.l.

Name

TLB4 Default

Details

Default configuration for TLB4

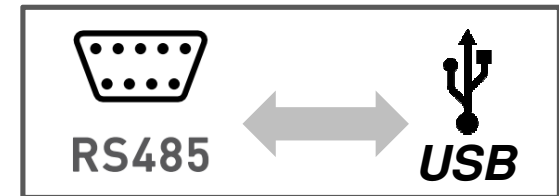
Save

- **Export** the configuration to file
- **Save** the configuration and link it to a Profile
- **Filter** through saved configuration
- **Compare** saved configurations

Profile	Name	Instrument	Model	Version	Details	Date	Last Edit		
						From <input type="text"/>	From <input type="text"/>	Clear Filters	
						To <input type="text"/>	To <input type="text"/>		
	Barilla Group S.p.A.	TLB4 FS20	TLB4	TLB4 RS485	2.00.00	TLB4 Full Scale = 20Kg, Max = 18Kg	2/13/2019 3:06:04 PM	2/13/2019 3:06:04 PM	
	Laumas Elettronica S.r.l.	TLB4 Default	TLB4	TLB4 RS485	2.00.00	Default configuration for TLB4	2/13/2019 10:34:41 AM	2/13/2019 10:34:41 AM	

CONNECTION

Baud Rate 9600
Address 1
Delay 0
Parity None
Stop Bit 1 2
Set to Default
Save



- **Upload** the created configuration to the instrument,
- **Download** the instrument configuration to the PC to edit/save/export it.
- **Connect** to the instrument and start a real-time communication.

Port	Instrument	Version	Model	Program	Approval	Serial Number
COM4	TLB4	2.00.00	TLB4 RS485	Base	Not Legal	633999999

New Upload Download **Connect** Refresh

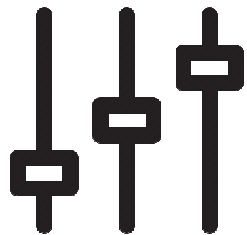
REALTIME



DASHBOARD

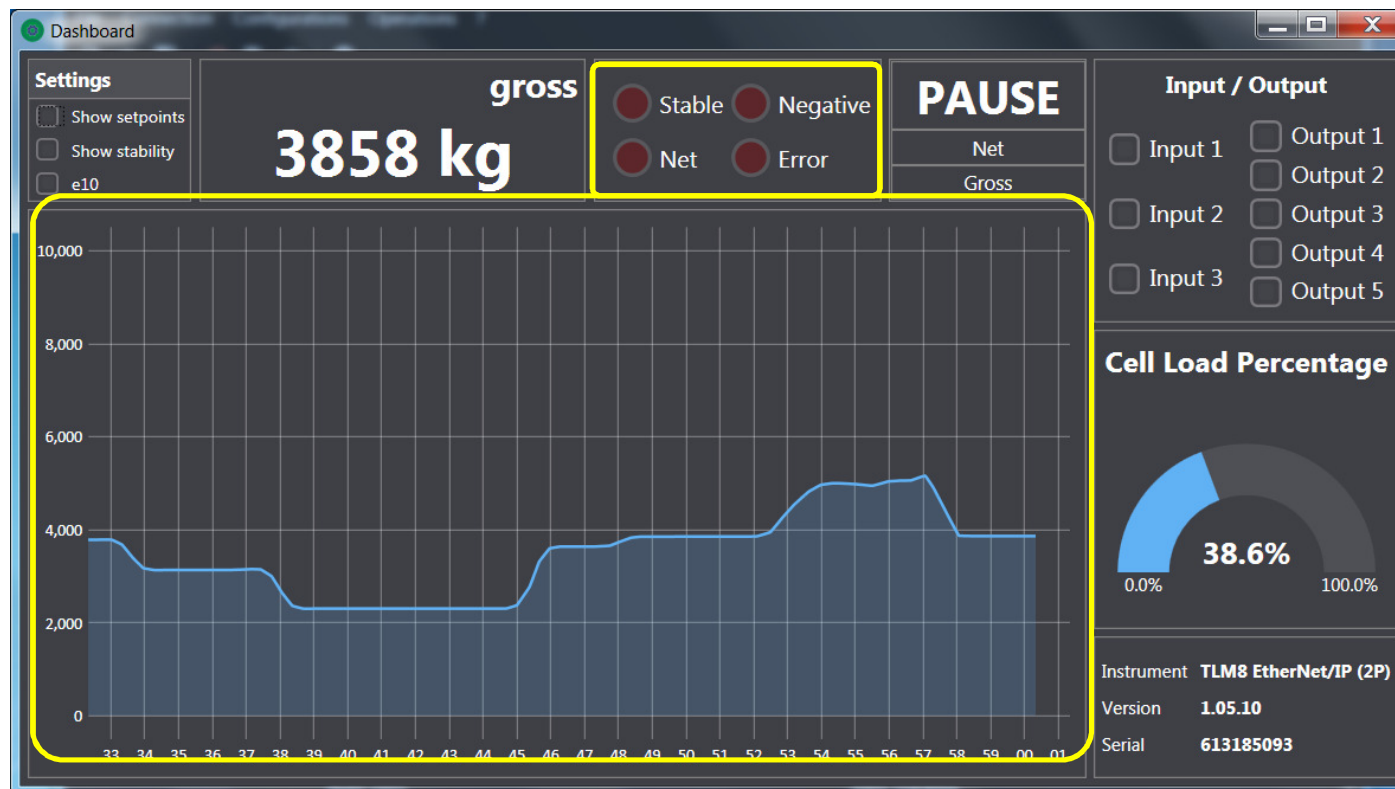


REAL CALIBRATION



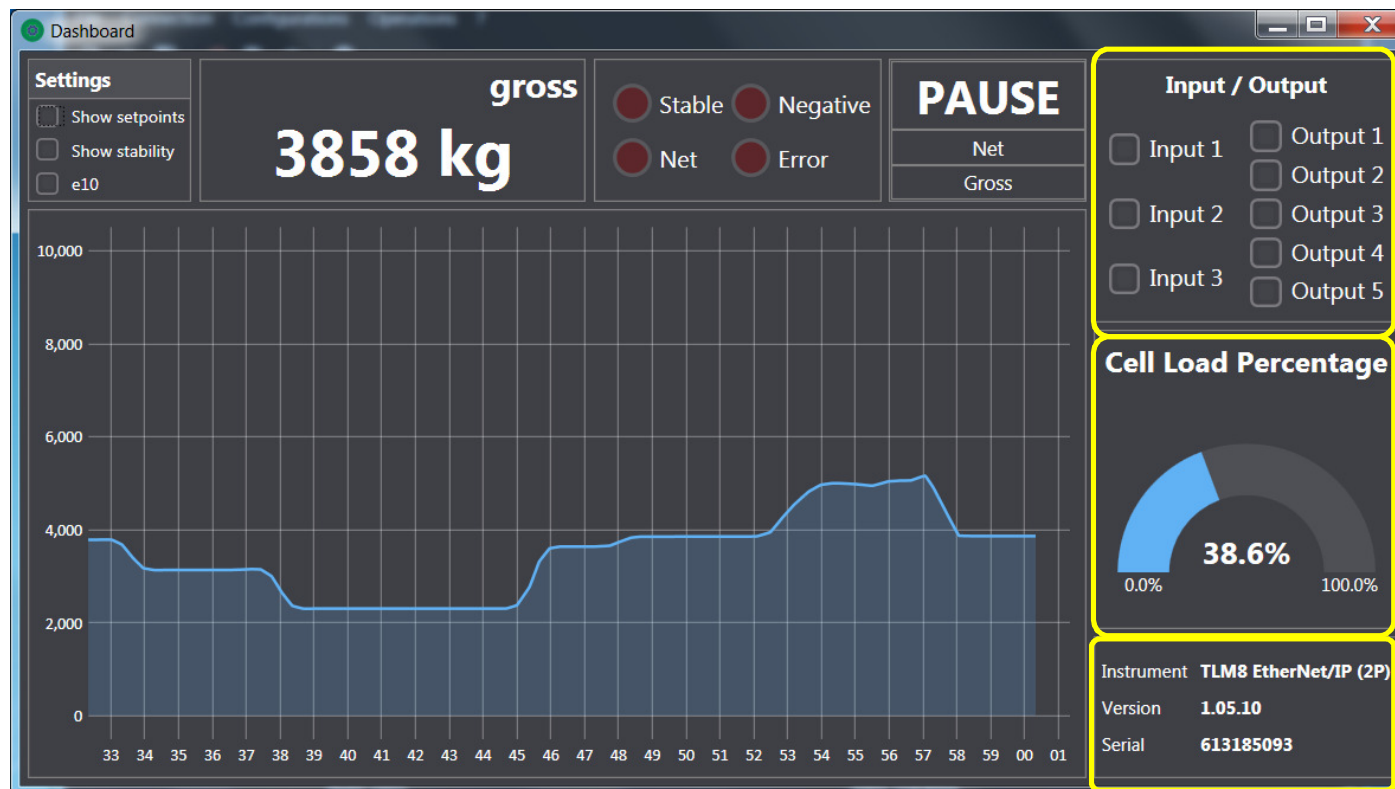
EQUALIZATION

REALTIME – DASHBOARD



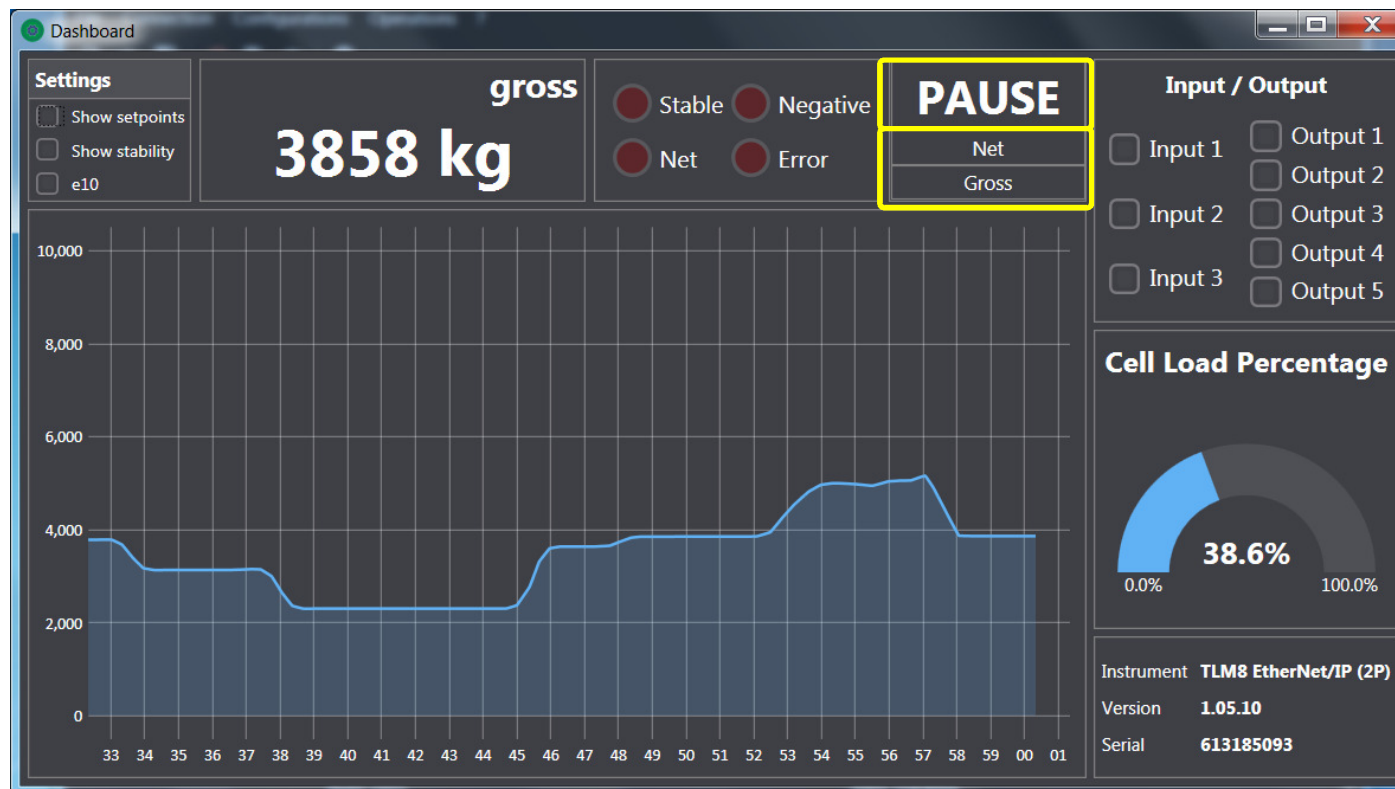
- Chart showing **weight trend** over a 30 seconds period
- **Indicators** showing when the weight is stable, negative, net or in error.

REALTIME – DASHBOARD



- Current state of **inputs** and **outputs**
- **Load percentage**, referred to the sensitivity of the load cells
- Instrument **info**

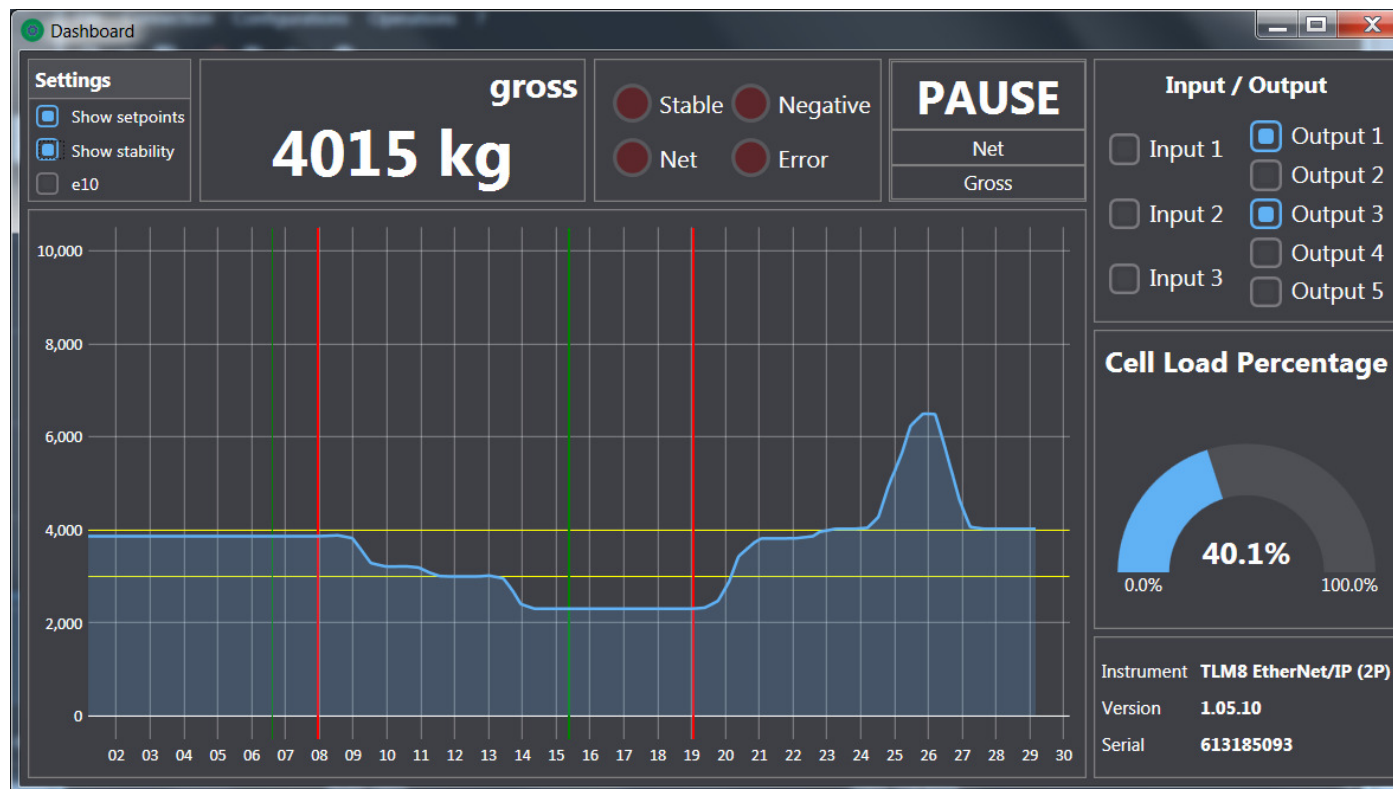
REALTIME – DASHBOARD



Quick actions:

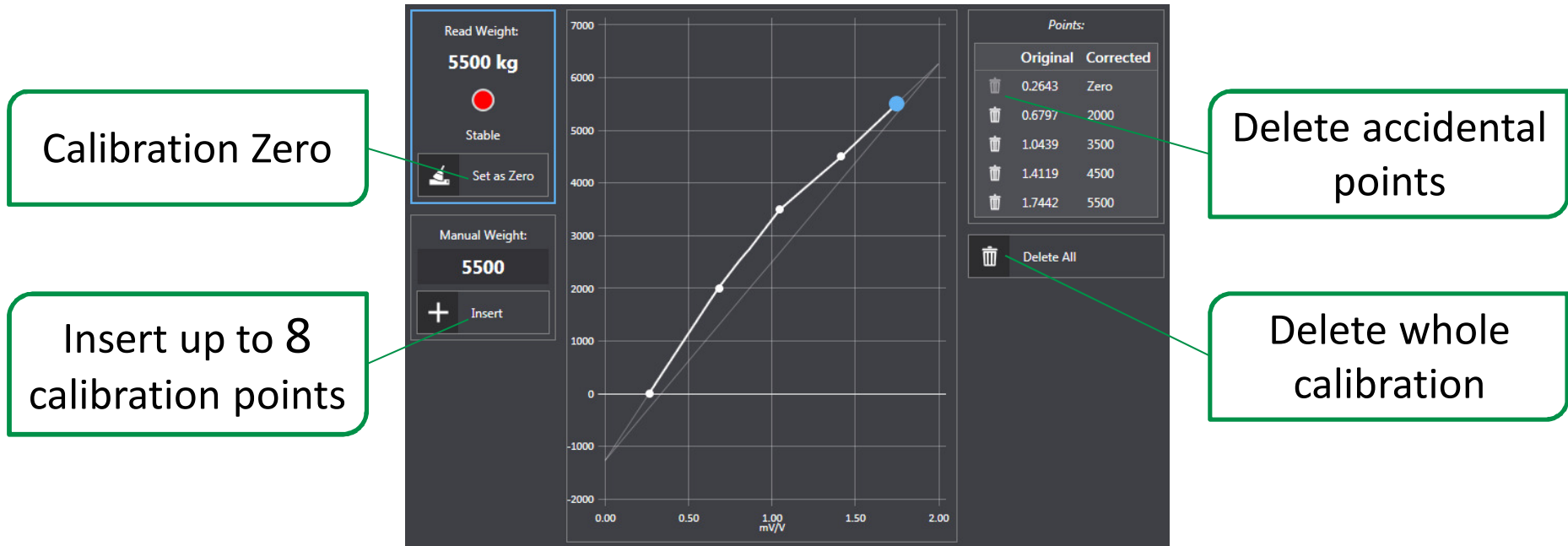
- **Pause** the chart for better analysis
- Perform a **tare** operation or switch back to the **gross** weight.

REALTIME – DASHBOARD



- The horizontal lines show the **setpoints** location.
- Vertical lines show when the weight **gains** or **loses** stability.

REALTIME – REAL CALIBRATION



Calibration Zero

Insert up to 8 calibration points

Delete accidental points

Delete whole calibration

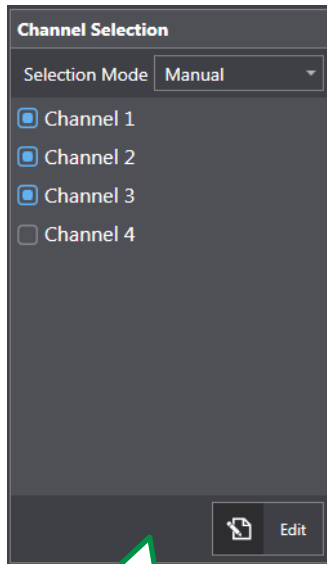
The chart shows in real time how the real calibration affects the weight

REALTIME – MULTICHANNEL

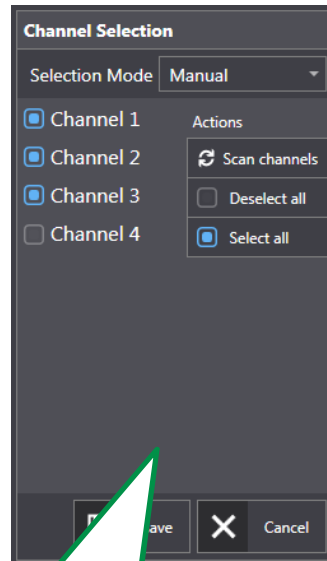


- Chart showing the current **weight distribution** over the active channels.
- Chart showing the current **mV** received from the load cells.
- Total **weight** read from the instrument.

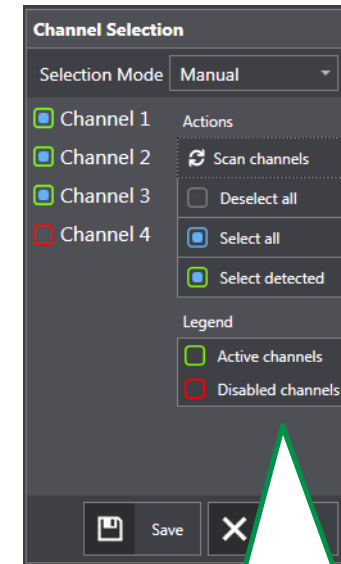
REALTIME – MULTICHANNEL – Channel Selection



Save current selection and fix it

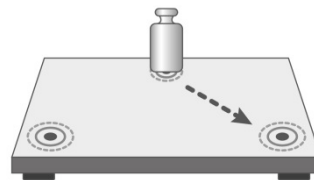
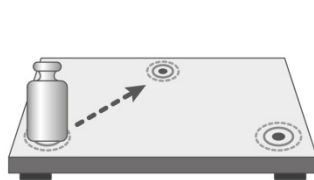
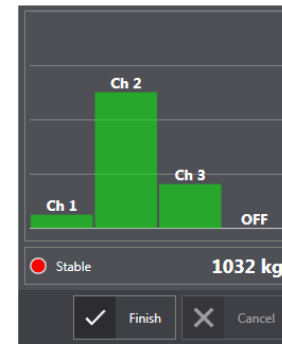
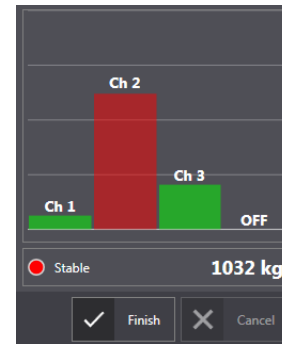
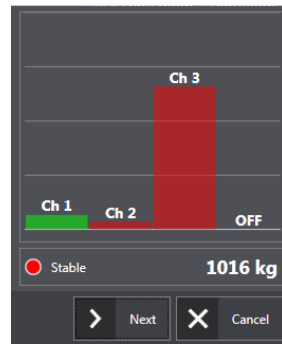
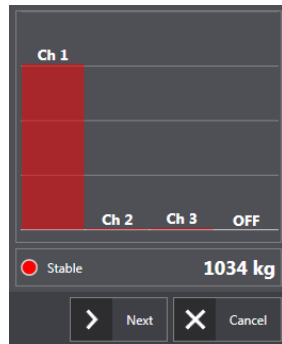


Edit selected channels manually



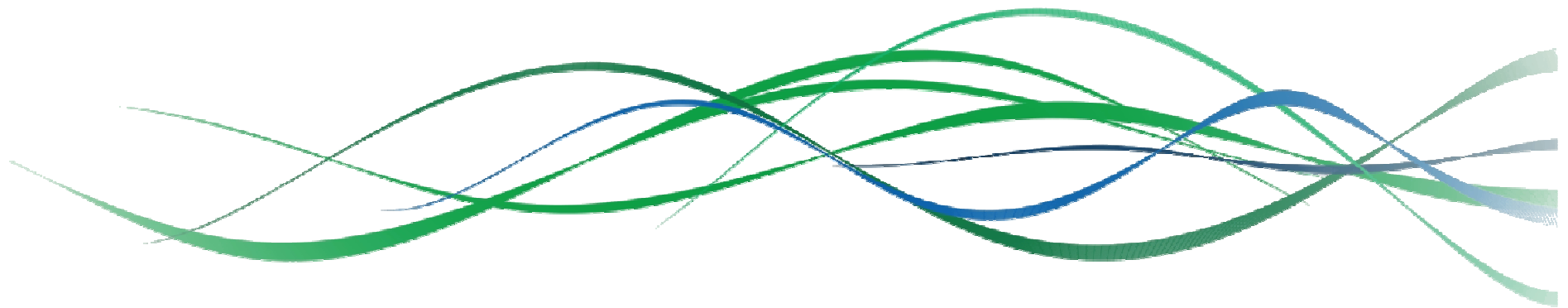
Verify currently working channels

REALTIME – MULTICHANNEL – Equalization



A wizard helps the user through the equalization procedure. When a channel gets equalized, its bar in the chart becomes green.

Thank you for your attention!



www.laumas.com

