

V10000/V10275-EN1090

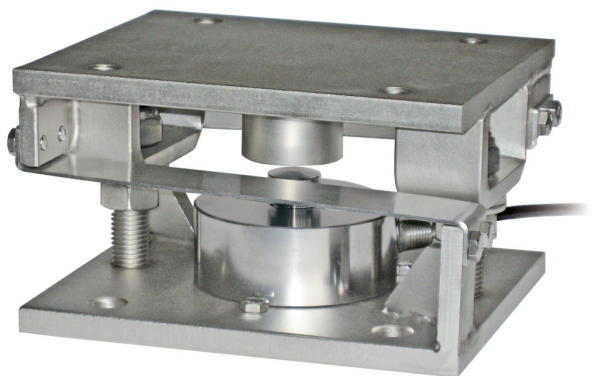
MOUNTING KIT for COMPRESSION-LOW PROFILE load cells

LAUMAS®

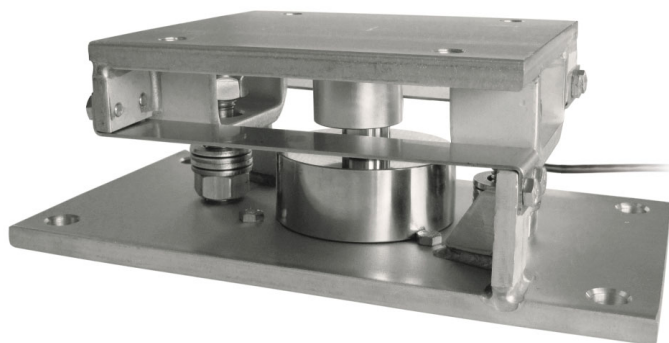
Series load cells: CBL - CBX



Up to 15000 kg application range



V10000/V10000EN1090



V10275/V10275EN1090

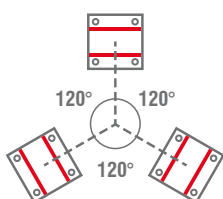
MAX STATIC LOAD kg	EN 1090	FOR LOAD CELLS	NET WEIGHT (kg)	CODE
15000	–	CBL (250 ÷ 12500 kg) - CBX (15000 kg)	5.7	V10000
15000	–	CBL (250 ÷ 12500 kg) - CBX (15000 kg)	6.9	V10275
15000	•	CBL (250 ÷ 12500 kg) - CBX (15000 kg)	5.7	V10000EN1090
15000	•	CBL (250 ÷ 12500 kg) - CBX (15000 kg)	6.9	V10275EN1090

Load cell not included.

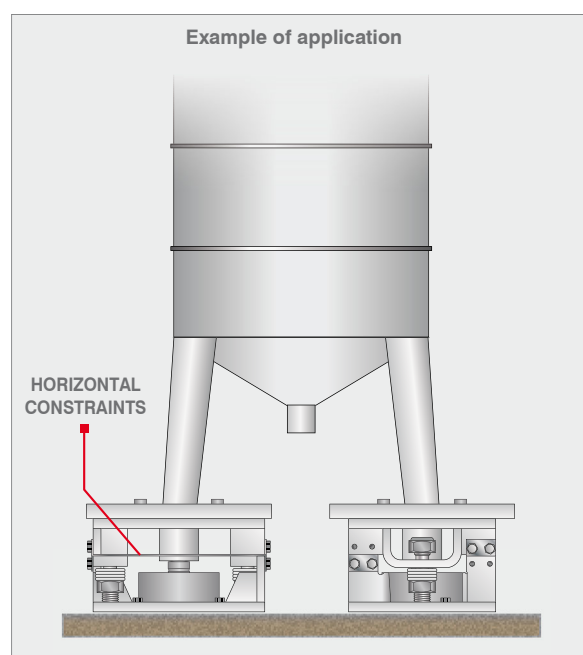
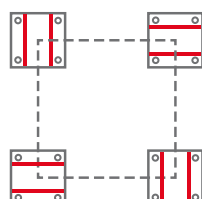
DESCRIPTION

- AISI 304 stainless steel upper and lower plates.
- AISI 304 stainless steel laminas against lateral forces.
- Anti-tilt constraint consisting of two threaded rods with self-locking nut.

HORIZONTAL CONSTRAINTS
ORIENTATION
IN STRUCTURES WITH
3-POINT SUPPORT



HORIZONTAL CONSTRAINTS
ORIENTATION
IN STRUCTURES WITH
4-POINT SUPPORT



V10000/V10275-EN1090

MOUNTING KIT for COMPRESSION-LOW PROFILE load cells

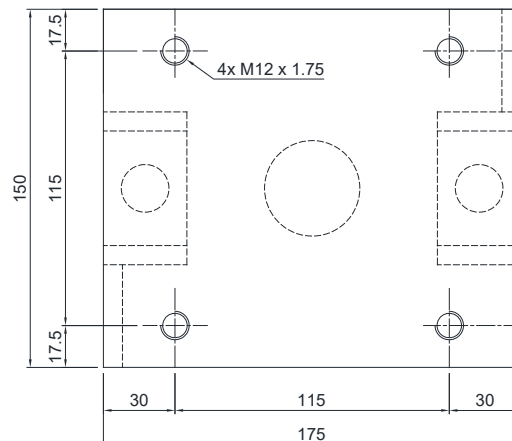
LAUMAS®

DIMENSIONS AND TECHNICAL SPECIFICATIONS

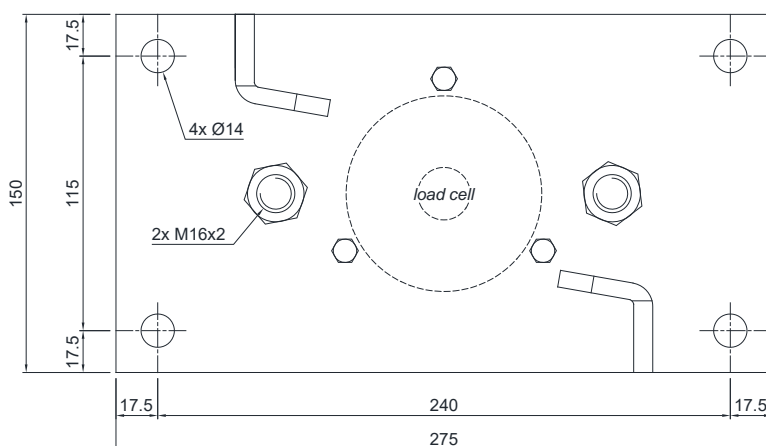
Upper and lower plates [2] must rest completely on not deformable surfaces. To ensure the stability of the structure, the system designer must predict any further precaution against side shifts and anti-tilt in function of: knocks and vibrations, wind effect, seismic conditions and hardness of support structure.

- Install the weighed system using only the mounting kit without the load cell [1] and inserting in its place a piece of pipe (1-2 mm higher than the load cell).
- To finish the installation (weldings, etc.), remove the piece of pipe and then removing the bolts to fix the the load cell [7] insert the load cell [1] in mounting kit.
- Connect lower and upper plates [2] to the earthing system then loosen nuts [5]; verify that the threaded rod [4] slides into the hole; turn anti-tilt nuts [6] to a distance of 1 mm from plate.
- Tighten the three bolts to fix the load cell [7].

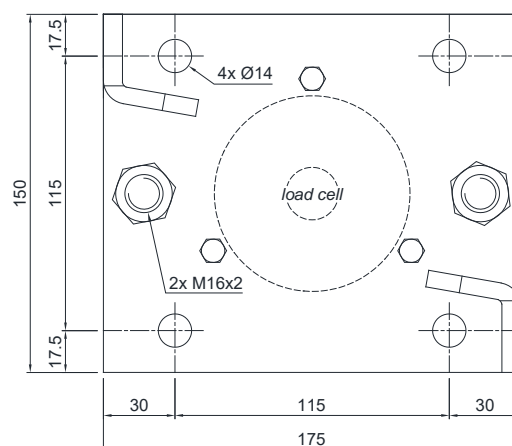
Upper plate



V10275/V10275EN1090 - Lower plate



V10000/V10000EN1090 - Lower plate



- [1] Load cell.
- [2] AISI 304 stainless steel upper and lower plates.
- [3] AISI 304 stainless steel laminas with horizontal constraint function.
- [4] Threaded rod.
- [5] Nut to be used as jack.
- [6] Anti-tilt self-locking nut.
- [7] M6 bolts to fix the load cell.

