

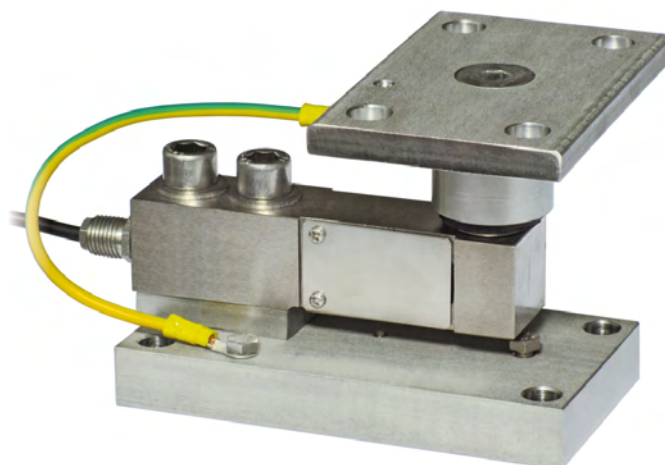
TF500/2000

MOUNTING KIT for SHEAR BEAM load cells

LAUMAS®

Series load cells: FTK - FTKL - FTP- FT-P - FTZ

Up to 2000 kg application range



MAX STATIC LOAD kg	FOR LOAD CELLS	NET WEIGHT (kg)	CODE
500	FTK - FTKL - FTP - FT-P - FTZ	2.3	TF500
2000	FTK - FTKL - FTP - FT-P - FTZ	2.9	TF2000
2000	FTK - FTKL - FTP - FT-P - FTZ	2.9	TF2000Z

Load cell not included.

DESCRIPTION

- Upper plate with a compression joint in AISI 304 stainless steel and rubber.
- Lower plate and block in AISI 304 stainless steel (TF500, TF2000) or in galvanized steel (TF2000Z).
- Compensation for any misalignments of the support plates of the structure.
- Locking screw to avoid damage during transport and installation.
- Can be used for systems with at least 3 supports.

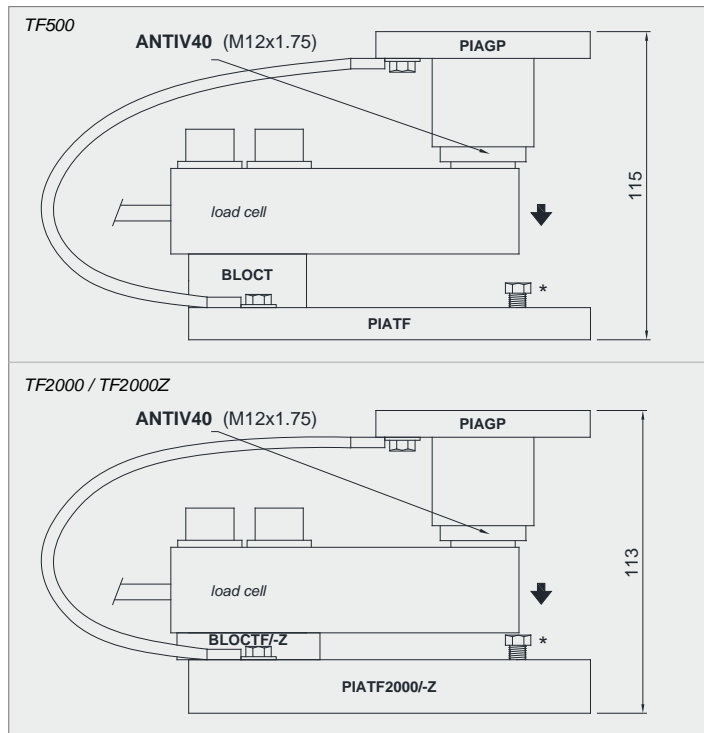
TF500/2000

MOUNTING KIT for SHEAR BEAM load cells

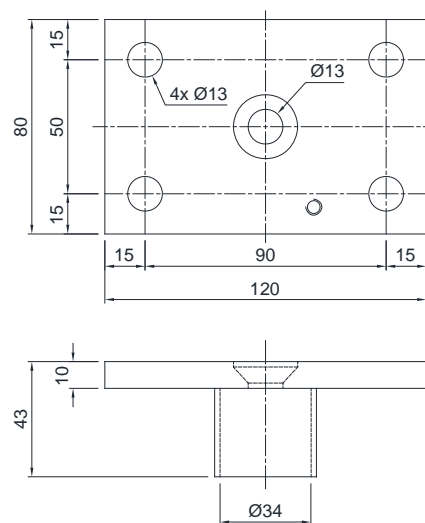
LAUMAS®

DIMENSIONS AND TECHNICAL SPECIFICATIONS

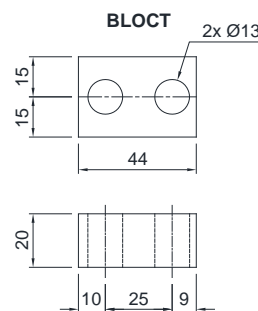
- During the transport and installation the lock (*) must touch under the load cell. After installation, move the lock away from the load cell.
- Interconnect the plates to the earthing.
- In case of structure with four-point support, if one-point does not touch the upper part of the mounting kit, you must proceed to insert a shim before fixing the bolts.
- For the load cell fixing screws (*), provide a tightening torque of 50 Nm for TF500/TF2000 and 79 Nm for TF2000Z.



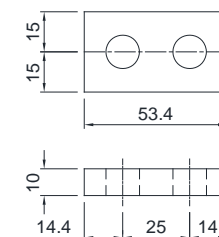
PIAGP



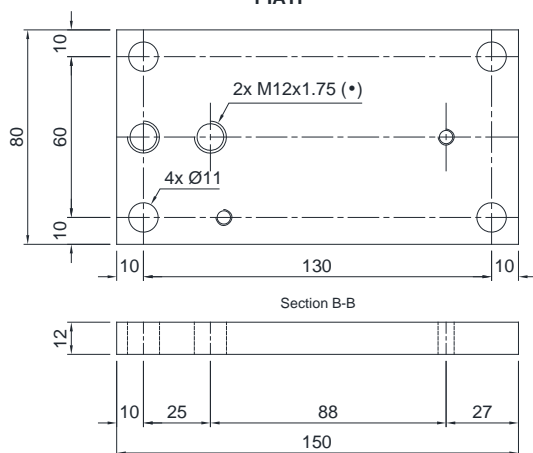
BLOCT



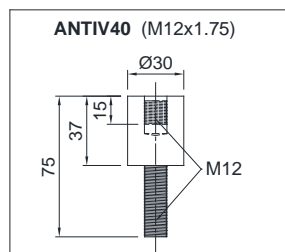
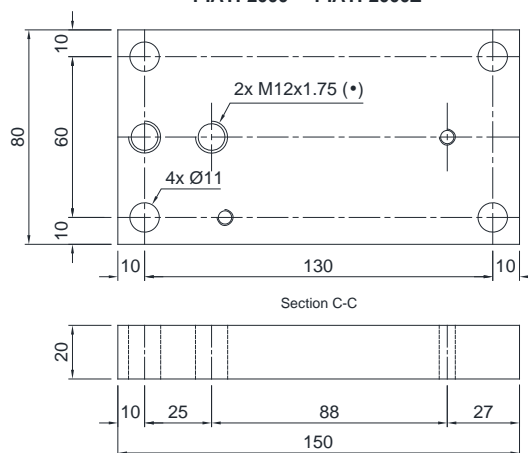
BLOCTF
BLOCTFZ



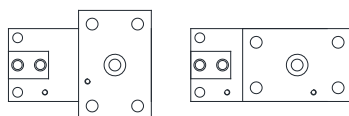
PIATF



PIATF2000 PIATF2000Z



POSSIBLE UPPER PLATE POSITIONS



FIXING TO THE WEIGHED STRUCTURE

