

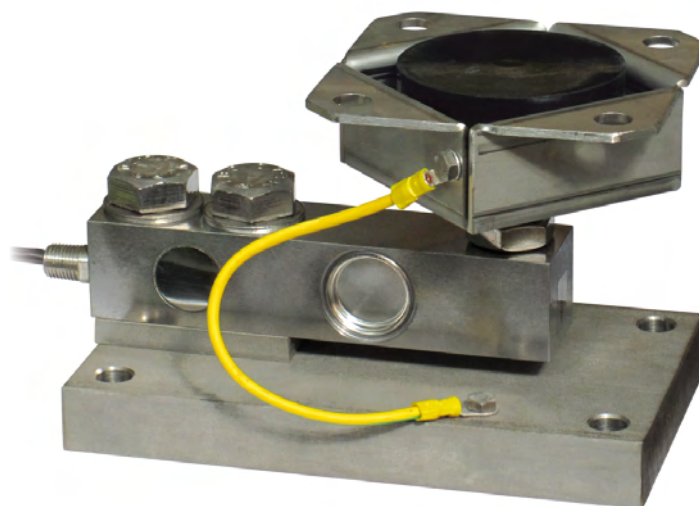
PV80 - PV60Z

MOUNTING KIT for SHEAR BEAM load cells

LAUMAS®

Series load cells: FTP - FTZ - FTK

Up to 5000 kg application range



MAX STATIC LOAD	kg	FOR LOAD CELLS	NET WEIGHT (kg)	CODE
5000		FTP - FTZ	6.9	PV80
5000		FTK	6.7	PV60Z

Load cell not included

DESCRIPTION

- Adjustable upper plate in AISI 304 stainless steel (PPV80) or galvanized steel (PPV60Z)
- Lower plate and block in AISI 304 stainless steel (PV80) or galvanized steel (PV60Z).
- Constraint against lateral forces and anti-tilt by AISI 304 stainless steel (PV80) or galvanized steel (PV60Z) self-centering joint foot.
- Compensation for any misalignments of the support plates of the structure.
- Adjustable height.

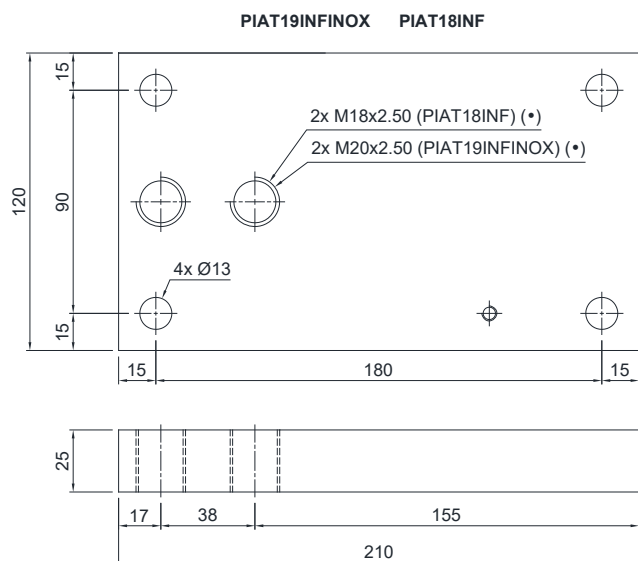
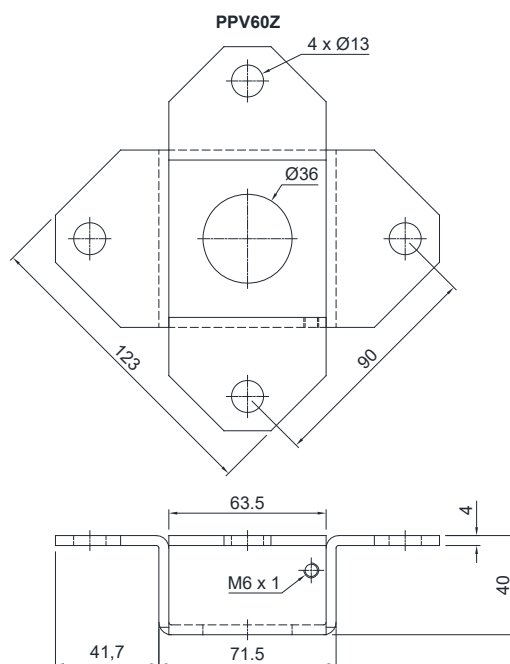
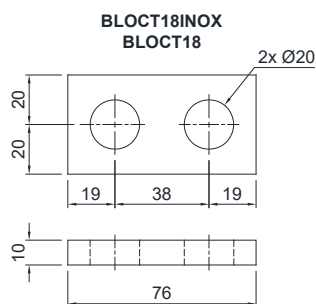
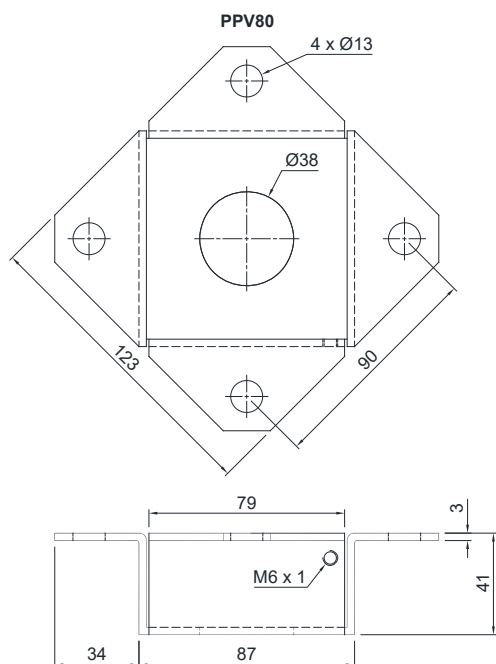
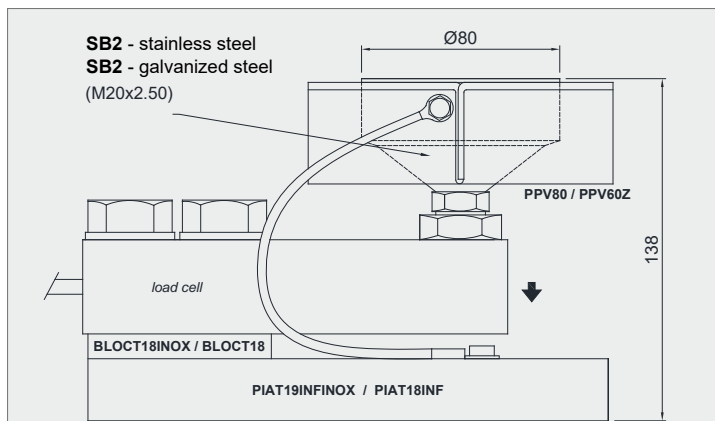
PV80 - PV60Z

MOUNTING KIT for SHEAR BEAM load cells

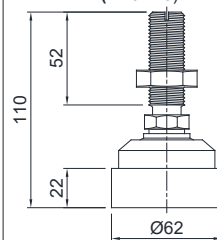
LAUMAS®

DIMENSIONS AND TECHNICAL SPECIFICATIONS

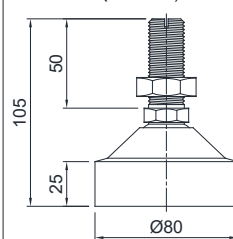
- Interconnect the plates to the earthing.
- In case of structure with four-point support, if one-point does not touch the upper part of the mounting kit, you must proceed to insert a shim before fixing the bolts.
- For the load cell fixing screws (•), provide a tightening torque of 280 Nm.



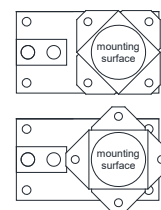
SB2 - galvanized steel
(M20x2.5)



SB2 - stainless steel
(M20x2.5)



POSSIBLE UPPER PLATE POSITIONS



FIXING TO THE WEIGHED STRUCTURE

