

PV80CLSEN1090

MOUNTING KIT for COMPRESSION-LOW PROFILE load cells

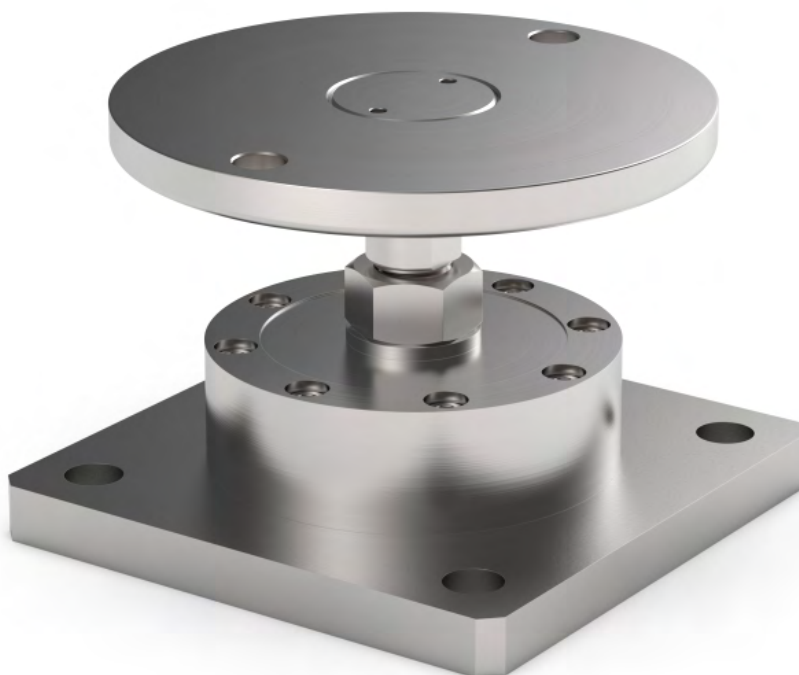
LAUMAS®

Series load cells: CLS



Up to 5000 kg application range

Certification EN1090



MAX STATIC LOAD	kg	FOR LOAD CELLS	NET WEIGHT (kg)	CODE
	5000	CLS (5000 kg)	1.5	PV80CLSEN1090

Load cell not included.

DESCRIPTION

- Constraint against lateral forces and anti-tilt by AISI 304 stainless steel self-centering joint foot.
- Compensation for any misalignments of the support plates of the structure.
- Adjustable height.

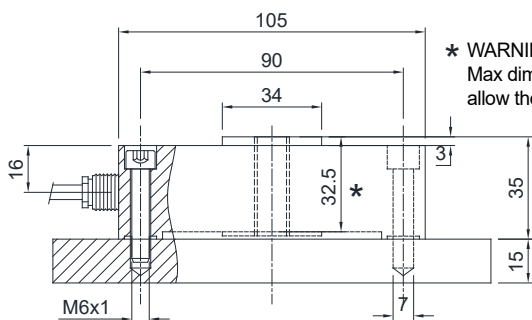
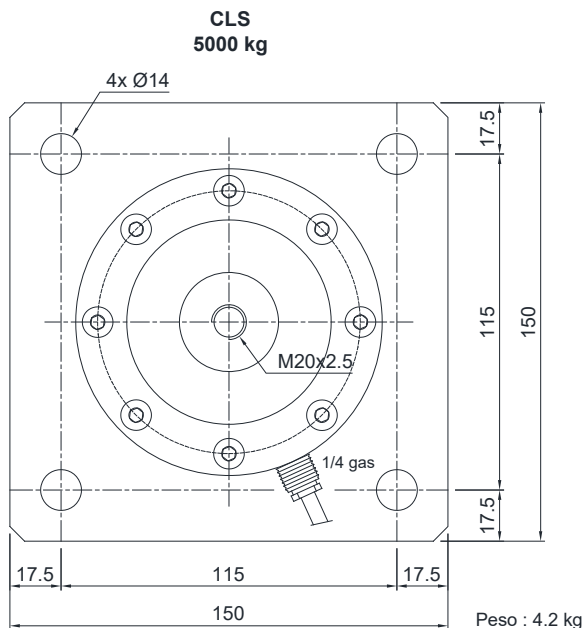
PV80CLSEN1090

MOUNTING KIT for COMPRESSION-LOW PROFILE load cells

LAUMAS®

DIMENSIONS AND TECHNICAL SPECIFICATIONS

- Finished the installation by means of a copper wire, connect the upper supporting plate with the lower supporting plate, then connect all the lower plates to the earthing system.
- In case of structure with four-point support, if one-point does not touch the support base of the foot, you must proceed to adjust foot height.



* WARNING!
Max dimension to insert the bolt to
allow the cell to perform properly

