



Capacity up to 7500 kg

DESCRIPTION

- Approved die-cast aluminum crane scale complete with upper shackle and lower swivel hook; suitable for bridge crane.
- 5-digit semi-alphanumeric red LED display (30 mm height).
- 4 signalling LED.
- 6 V rechargeable internal battery, 10 Ah capacity.
- Operating time: 60 hours.
- External battery charger 100-240 VAC included.
- Remote control with range up to 10 m line of sight.

MAIN FUNCTIONS

- Semi-automatic tare (net/gross weight).
- Weight zero setting.
- Tare weight zero setting.
- High resolution visualization.
- Remote control functions: high resolution, zero, net weight, stand-by.
- Energy saving mode.



CAPACITY	kg	OIML R76	DIVISION (kg)	NET WEIGHT (kg)	CODE
1500		•	e=0.5	16	DTEM1.5T
3000		•	e=1	23	DTEM3T
7500		•	e=5	32	DTEM7.5T

CERTIFICATIONS



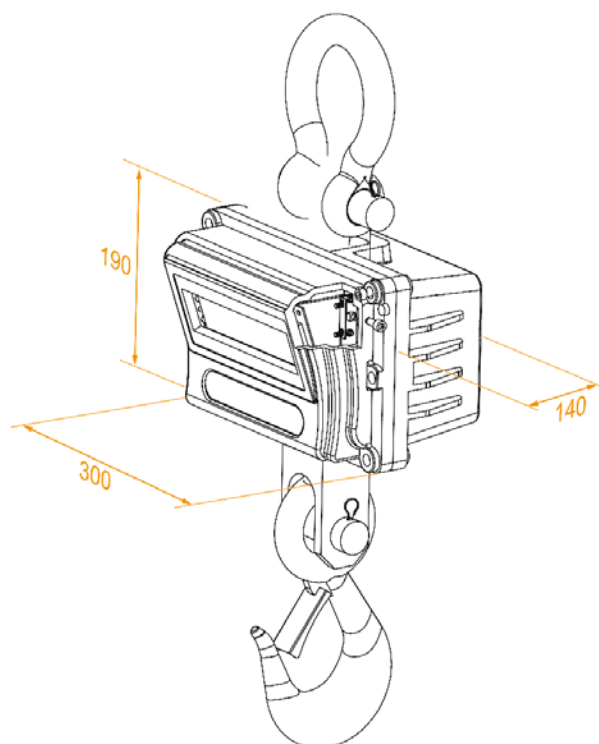
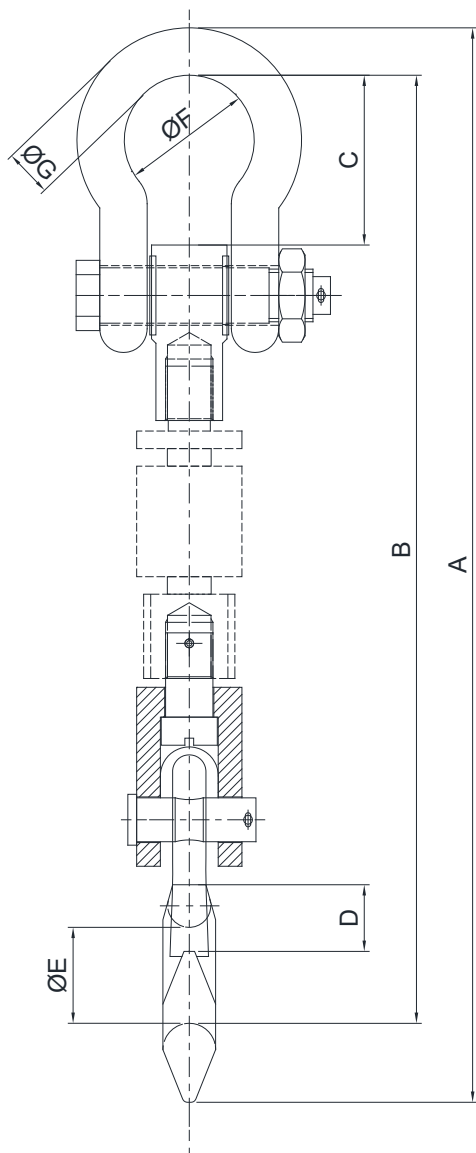
OIML R76:2006, class III, 3000 divisions

M

Conformity assessment (initial verification)

Compliant to machinery directive 2006/42/EC and EN 13155:2003/A2:2009

DIMENSIONS (mm)



Mod.	Load Cell	Breaking load	A	B	C	D	ØE	ØF	ØG
DTEM1.5T	3t	12t	650 \pm 10	580 \pm 10	125	35	38.5	60	26
DTEM3T	5t	20t	740 \pm 10	660 \pm 10	125	47	48	80	26
DTEM6T	10t	40t	860 \pm 10	770 \pm 10	122	54.4	62	90	31
DTEM7.5T	10t	40t	860 \pm 10	770 \pm 10	122	54.4	62	90	31

TECHNICAL FEATURES

Working load limit without releasing the load (% of full scale)	300%
Safe overload (% of full scale)	200%
Ultimate overload (% of full scale)	400%
Humidity (condensate free)	10÷90%
Working temperature	-10°C +40°C