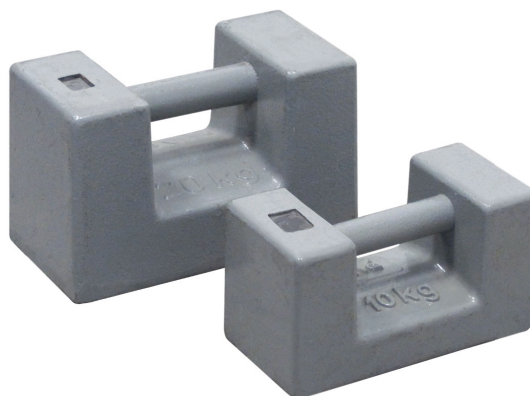




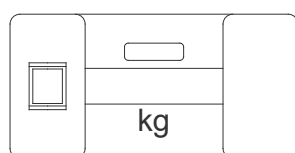
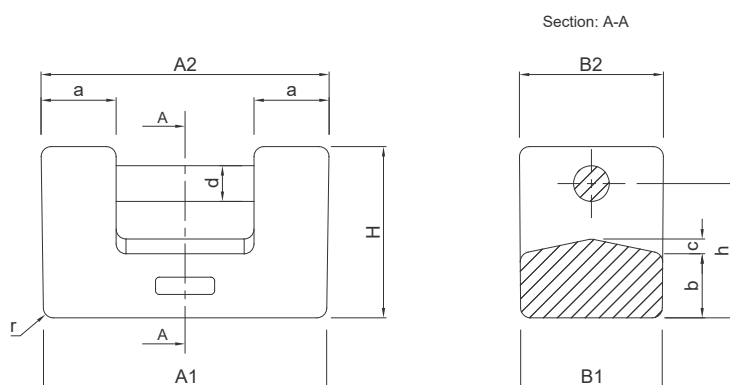
## DESCRIZIONE

- Ghisa verniciata HT150
- Resistenza a trazione (MPa) = 150w
- Struttura: ghisa perlite (grafite lamellare+ferrite).
- Composizione (%): C: 3.46 - 3.54  
Si: 0.51 - 0.57  
Mn: 2.12 - 2.49
- Certificabile in classe M1 secondo OIML R111-1.
- Valigetta in alluminio con maniglia per il trasporto (opzione a richiesta).



VALORE NOMINALE kg	TOLLERANZA	DIMENSIONI	CODICE MASSA	CODICE VALIGETTA
5	±250 mg (M1)	152 x 77 x 84 mm	PC5M1	BOXPC5M1
10	±500 mg (M1)	193 x 97 x 109 mm	PC10M1	BOXPC10M1
20	±1000 mg (M1)	234 x 117 x 139 mm	PC20M1	BOXPC20M1

## DIMENSIONI



Nominal value	A1	A2	B1	B2	H	a	b	c	d	h	r
5 kg	150	152	75	77	84	36	30	6	19	66	5
10 kg	190	193	96	97	109	46	38	8	25	84	6
20 kg	230	234	115	117	139	61	52	12	29	109	8