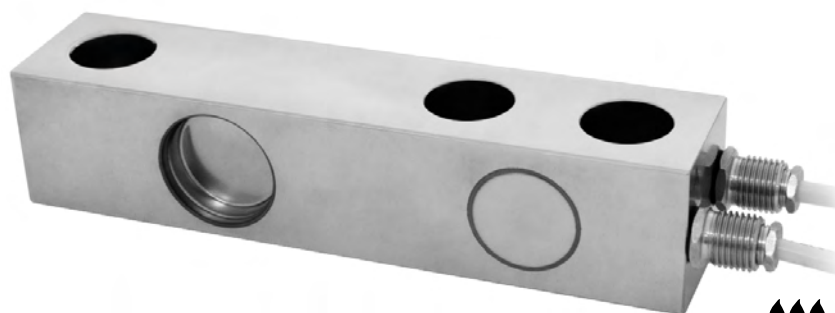


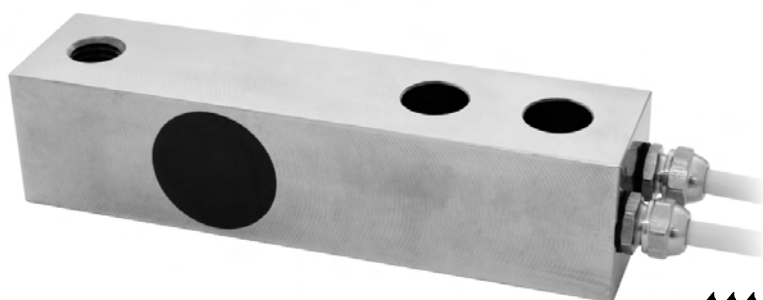


capacity 6000 kg



IP68

capacity 1000 kg



IP67

- 17-4 PH STAINLESS STEEL
- COMBINED ERROR $\leq \pm 0.03\%$
- IP67 - IP68 PROTECTION RATING
- TWO OUTPUT CABLES FOR DUAL SAFETY SYSTEMS

CAPACITY	kg	NET WEIGHT (kg)
1000		0.93
6000		1.54

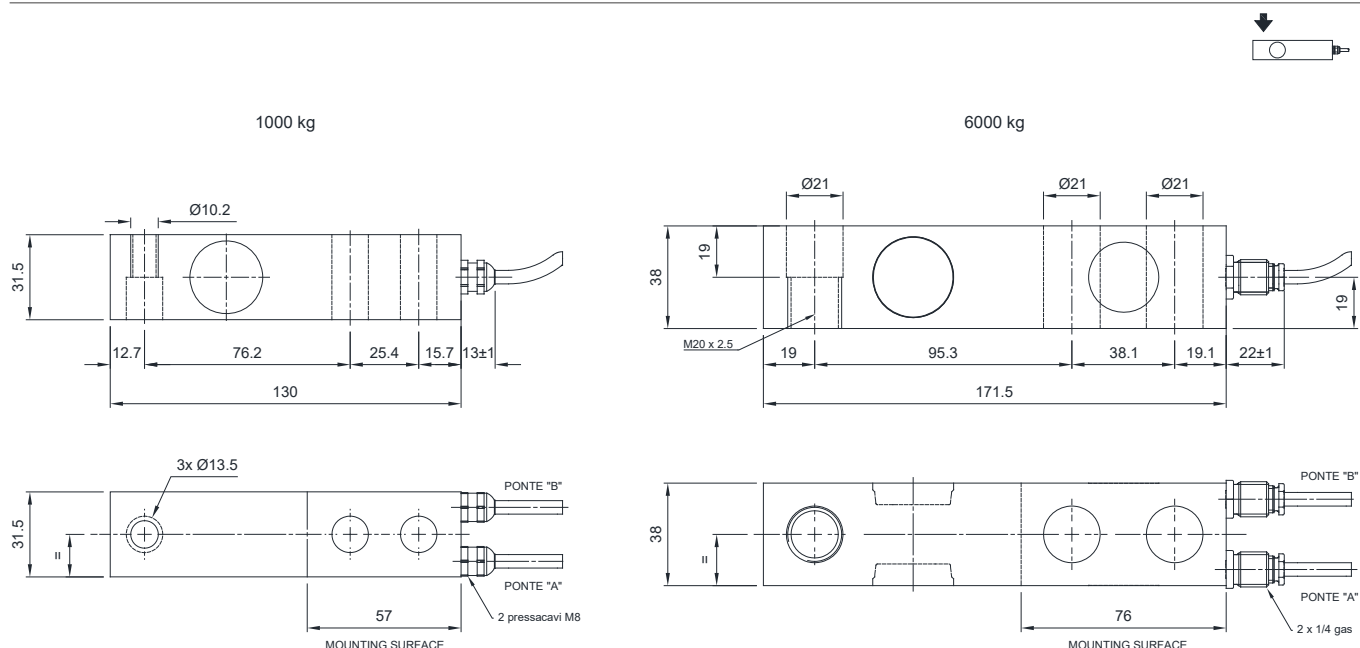
CERTIFICATIONS

- EAC** Complies with the Eurasian Customs Union standards
- UKCA** Equivalent of the CE marking for the United Kingdom

CERTIFICATIONS ON REQUEST

- ✓ Linearity test

DIMENSIONS (mm)

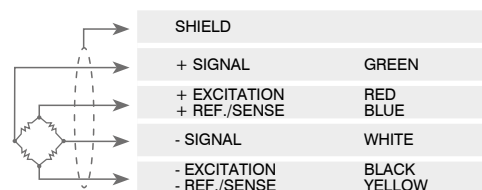


TECHNICAL FEATURES

Material	17-4 PH stainless steel		
Nominal load (E max)	1000 - 6000 kg		
Combined error	$\leq \pm 0.03\%$		
Protection rating	IP67 (1000 kg) - IP68 (6000 kg)		
Rated output	2 mV/V $\pm 0.1\%$	Input resistance	370 $\Omega \pm 10$
Temperature effect on zero	0.005% $^{\circ}\text{C}$	Output resistance	355 $\Omega \pm 5$
Temperature effect on span	0.005% $^{\circ}\text{C}$	Zero balance	$\pm 2\%$
Compensated temperature range	-10 $^{\circ}\text{C}$ / +50 $^{\circ}\text{C}$	Insulation resistance	>5000 M Ω
Operating temperature range	-20 $^{\circ}\text{C}$ / +70 $^{\circ}\text{C}$	Safe overload (% of full scale)	150%
Creep at nominal load in 30 minutes	0.02%	Ultimate overload (% of full scale)	300%
Max supply voltage without damage	15 V	Deflection at nominal load	0.25 mm

ELECTRICAL CONNECTIONS

Cable length	5 m+5 m (1000 kg); 10 m+10 m (6000 kg)
Cable diameter	5 mm
Cores	6 x 0.25 mm ²



The Company reserves the right to make changes to the technical data, drawings and images without notice.