



SL kg 25 <sup>(1)</sup> .....  
 SL kg 100 <sup>(2)</sup>, 200 <sup>(3)</sup>, 300 <sup>(3)</sup>, 500 <sup>(3)</sup> .....  
 SL kg 1000 <sup>(3)</sup>, 2500 <sup>(4)</sup> .....

(1) Snodo EM8 M8x1,25 con dado / Joint EM8 M8x1,25 with nut..... cad./each  
 (2) Snodo EM10 M10x1,5 con dado / Joint EM10 M10x1,5 with nut..... cad./each  
 (3) Snodo EM12 M12x1,75 con dado / Joint EM12 M12x1,75 with nut..... cad./each  
 (4) Snodo EM20 M20x1,5 con dado / Joint EM20 M20x1,5 with nut..... cad./each

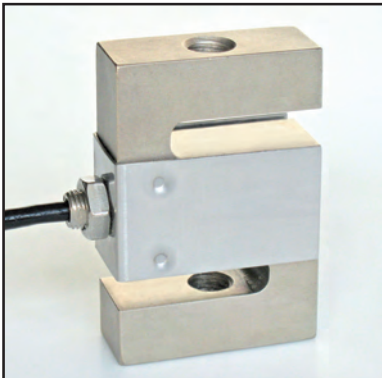
Approvazione ATEX  II 1 G  II 2 D (zone 0-1-2-21-22) / ATEX approved (zone 0-1-2-21-22).....



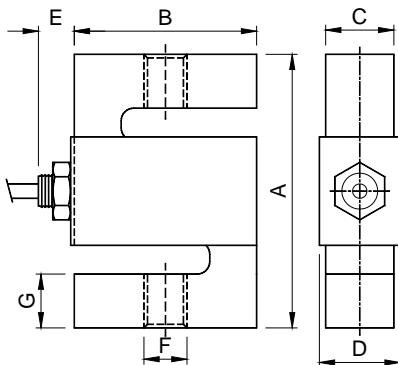
APPROVAZIONE OIML R60 C3 (SL 25 kg escluse)  
**C3** OIML R60 C3 APPROVED (SL 25 kg not approved)



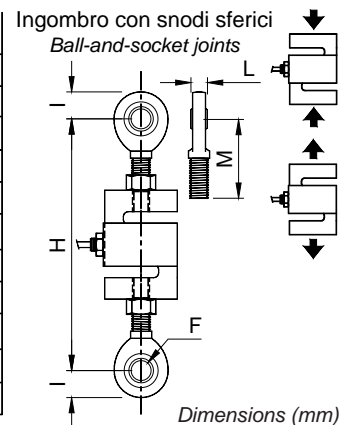
A richiesta versione approvata OIML R60 C4 (SL 25 kg escluse)  
**C4** On request OIML R60 C4 version approved (SL 25 kg not approved)



- ESECUZIONE IN ACCIAIO SPECIALE
- ERRORE COMBINATO  $\leq \pm 0,02\%$
- GRADO DI PROTEZIONE IP 67
- ALLOY STEEL CONSTRUCTION
- COMBINED ERROR  $\leq \pm 0.02\%$
- PROTECTION CLASS IP 67



	25 kg	100 kg	200 <sup>(a)</sup> -300 <sup>(b)</sup> -500 <sup>(c)</sup> kg	1000 kg	2500 kg
A	76.2	76.2	76.2	76.2	101.5
B	50.8	50.8	50.8	50.8	76.2
C	13	19	19	25.4	25.4
D	16.2	22.5	22.5	29	29
E	11	10	10	10	7
F	M8x1.25	M10x1.5	M12x1.75	M12x1.75	M20 x1.5
G	15.5	15.5	15 (a) 14 (b) 13.5 (c)	13.5	20
H	131	142	156 (a) 158 (b) 159	161	221.5
I	11.5	14.5	(c)17	17	25
L	8	9	10	10	16
M	43	48.5	55	55	80



CARATTERISTICHE TECNICHE

TECHNICAL FEATURES

SENSIBILITA' 2 mV/V +/-0.2%  
 EFFETTO DELLA TEMPERATURA SULLO ZERO 0.0015 % / °C  
 EFFETTO DELLA TEMPERATURA SUL FONDO SCALA 0.0017 % / °C  
 COMPENSAZIONE TERMICA - 10°C / + 40°C  
 CAMPO DI TEMPERATURA DI LAVORO - 35°C / + 65°C  
 CREEP A CARICO NOMINALE DOPO 30 MINUTI 0.03 %  
 TENSIONE DI ALIMENTAZIONE MAX TOLLERATA 15 Volt  
 RESISTENZA D'INGRESSO 350 ohm +/- 3.5  
 RESISTENZA DI USCITA 350 ohm +/- 3.5  
 BILANCIAMENTO DI ZERO +/- 1 %  
 RESISTENZA D'ISOLAMENTO > 5000 Mohm  
 CARICO STATICO MASSIMO (% sul Fondo Scala) 150 %  
 CARICO DI ROTTURA (% sul Fondo Scala) > 300 %  
 DEFLESSIONE A CARICO NOMINALE 0.4 mm

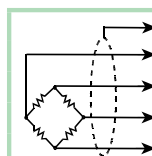
2 mV/V +/-0.2%  
 0.0015 % / °C  
 0.0017 % / °C  
 - 10°C / + 40°C  
 - 35°C / + 65°C  
 0.03 %  
 15 Volt  
 350 ohm +/- 3.5  
 350 ohm +/- 3.5  
 +/- 1 %  
 > 5000 Mohm  
 150 %  
 > 300 %  
 0.4 mm

RATED OUTPUT  
 TEMPERATURE EFFECT ON ZERO  
 TEMPERATURE EFFECT ON SPAN  
 COMPENSATED TEMPERATURE RANGE  
 OPERATING TEMPERATURE RANGE  
 CREEP AT NOMINAL LOAD IN 30 MINUTES  
 MAX SUPPLY VOLTAGE WITHOUT DAMAGE  
 INPUT RESISTANCE  
 OUTPUT RESISTANCE  
 ZERO BALANCE  
 INSULATION RESISTANCE  
 SAFE OVERLOAD (% of Full Scale)  
 ULTIMATE OVERLOAD (% of Full Scale)  
 DEFLECTION AT NOMINAL LOAD

CAVO

CABLE

CAVO		CABLE
LUNGHEZZA		LENGTH
SL kg 25-300	5 m	SL kg 25-300
SL kg 500-2500	10 m	SL kg 500-2500
DIAMETRO	5 mm	DIAMETER
FILI CONDUTTORI	4 x 0.24 mm <sup>2</sup>	CORES



SCHERMO	SHIELD
+ SEGNALE (VERDE)	+ SIGNAL (GREEN)
+ ALIMENTAZIONE (ROSSO)	+ EXCITATION (RED)
- SEGNALE (BIANCO)	- SIGNAL (WHITE)
- ALIMENTAZIONE (NERO)	- EXCITATION (BLACK)