





- CTOL kg 50, 100, 200, 300, 500 <sup>(1)</sup> .....
- CTOL kg 1000 <sup>(2)</sup> .....
- CTOL kg 2500 <sup>(3)</sup> .....
- CTOL kg 5000 <sup>(4)</sup> .....

**OPZIONI A RICHIESTA :**

- (1) - Snodo EM12 M12x1,75 con dado ..... cad. - Joint EM12 M12x1.75 with nut..... each
- (2) - Snodo EM16 M16x2 con dado..... cad. - Joint EM16 M16x2 with nut..... each
- (3) - Snodo EM20 M20x1,5 con dado..... cad. - Joint EM20 M20x1.5 with nut..... each
- (4) - Snodo EM25 M24x2 con dado..... cad. - Joint EM25 M24x2 with nut..... each
- Approvazione ATEX  II 1 G  II 2 D (zona 0-1-2-21-22) - ATEX approved  II 1 G  II 2 D (zone 0-1-2-21-22)

**OPTIONS ON REQUEST :**

Idonee come limitatore di carico per impianti di sollevamento in abbinamento a strumenti serie TLU e LCD-2 (vedi pag. 126, 127).  
Suitable for limiting device with TLU and LCD-2 instruments (see pages 126, 127).



**Realizzate in accordo alle norme OIML R60**

Manufactured according to OIML R60 standards

**- ESECUZIONE IN ACCIAIO INOX AISI 420**

**- ERRORE COMBINATO  $\leq \pm 0,03\%$**

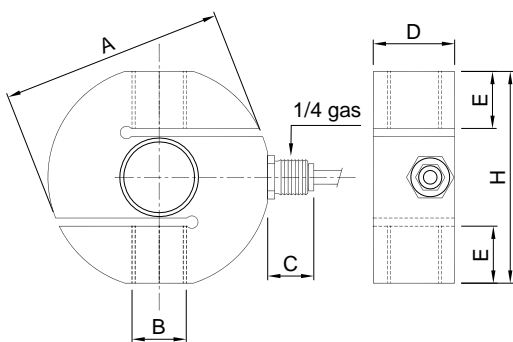
**- GRADO DI PROTEZIONE IP 67**

**- STAINLESS STEEL AISI 420 CONSTRUCTION**

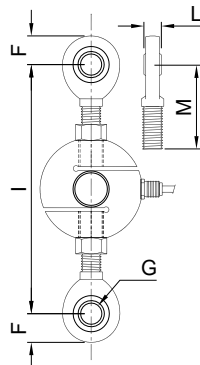
**- COMBINED ERROR  $\leq \pm 0.03\%$**

**- PROTECTION RATING IP 67**

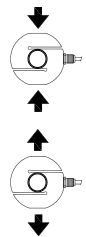
**Dimensions (mm)**



**Ingombro con snodi sferici  
Ball-and-socket joints**



	kg 50	kg 500	kg 1000	kg 2500	kg 5000
A	63.5	82	82	102	
B	M12x1.75	M16x2	M20x1.5	M24x2	
C	17	17	17	17	
D	22	30	30	45	
E	14.5	21	21	24	
F	17	23	25	32	
G	Ø 12	Ø 17	Ø 20	Ø 24	
H	59.5	78	78	90	
I	150	185	185	235	
L	10	14	16	20	
M	55	70	80	95	



**CARATTERISTICHE TECNICHE**

SENSIBILITA' CTOL kg 50, 100, 200, 300  
 SENSIBILITA' CTOL kg 500, 1000, 2500, 5000  
 EFFETTO DELLA TEMPERATURA SULLO ZERO  
 EFFETTO DELLA TEMPERATURA SUL FONDO SCALA  
 COMPENSAZIONE TERMICA  
 CAMPO DI TEMPERATURA DI LAVORO  
 CREEP A CARICO NOMINALE DOPO 30 MINUTI  
 TENSIONE DI ALIMENTAZIONE MAX TOLLERATA  
 RESISTENZA D'INGRESSO  
 RESISTENZA DI USCITA  
 BILANCIAMENTO DI ZERO  
 RESISTENZA D'ISOLAMENTO  
 CARICO STATICO MASSIMO (% sul Fondo Scala)  
 CARICO DI ROTTURA (% sul Fondo Scala)  
 DEFLESSIONE A CARICO NOMINALE

2 mV/V +/- 0.5%  
 2 mV/V +/- 0.1%  
 0.0025 % / °C  
 0.0025 % / °C  
 - 10°C / + 40°C  
 - 20°C / + 60°C  
 0.03 %  
 15 Volt  
 385 ohm +/- 30  
 350 ohm +/- 3  
 +/- 2 %  
 > 2000 Mohm  
 150 %  
 > 250 %  
 0.4 mm

**TECHNICAL FEATURES**

RATED OUTPUT for CTOL kg 50, 100, 200, 300  
 RATED OUTPUT for CTOL kg 500, 1000, 2500, 5000  
 TEMPERATURE EFFECT ON ZERO  
 TEMPERATURE EFFECT ON SPAN  
 COMPENSATED TEMPERATURE RANGE  
 OPERATING TEMPERATURE RANGE  
 CREEP AT NOMINAL LOAD IN 30 MINUTES  
 MAX SUPPLY VOLTAGE WITHOUT DAMAGE  
 INPUT RESISTANCE  
 OUTPUT RESISTANCE  
 ZERO BALANCE  
 INSULATION RESISTANCE  
 SAFE OVERLOAD (% of Full Scale)  
 ULTIMATE OVERLOAD (% of Full Scale)  
 DEFLECTION AT NOMINAL LOAD

**CAVO**

**CABLE**

LUNGHEZZA	10 m	LENGTH
DIAMETRO	5 mm	DIAMETER
FILI CONDUTTORI	4/6 x 0.20 mm <sup>2</sup>	CORES



\* Dove previsto (where provided)