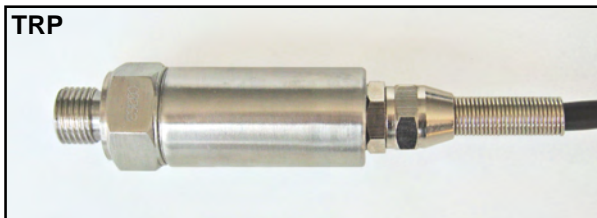


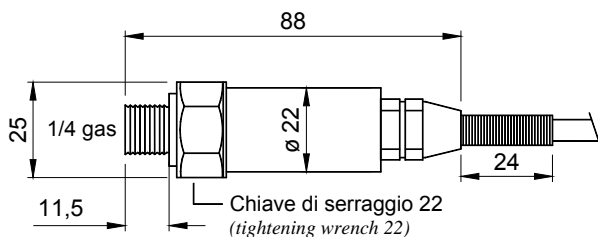
<b>TRP</b>	<b>bar 60, 600</b> .....
<b>TRP/4-20/2F</b>	<b>bar 60, 600</b> (Uscita analogica 4-20mA / Analog output 4-20mA) .....



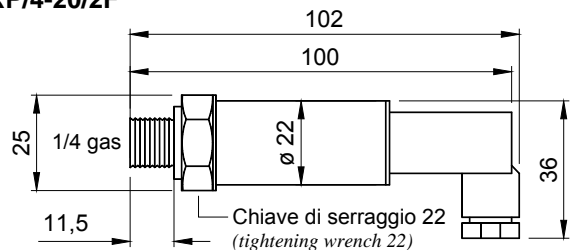
- ESECUZIONE ACCIAIO INOX AISI 316
- CLASSE DI PRECISIONE +/- 1 %
- GRADO DI PROTEZIONE IP 67

- AISI316 STAINLESS STEEL CONSTRUCTION
- ACCURACY CLASS +/- 1 %
- PROTECTION RATING IP 67

**TRP**



**TRP/4-20/2F**



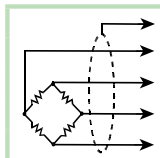
**CAVO**

LUNGHEZZA  
DIAMETRO  
FILI CONDUTTORI

2 m  
5 mm  
4 0.24 mm<sup>2</sup>

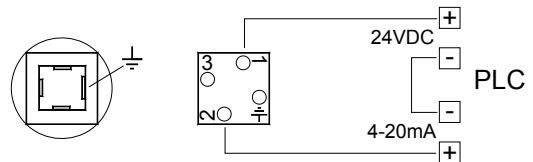
**CABLE**

LENGTH  
DIAMETER  
CORES



SCHEMMA	SHIELD
+ SEGNALE (BLU)	+ SIGNAL (BLUE)
+ ALIMENTAZIONE (ROSSO)	+ EXCITATION (RED)
- SEGNALE (BIANCO)	- SIGNAL (WHITE)
- ALIMENTAZIONE (GIALLO)	- EXCITATION (YELLOW)

tecnica a 2 fili (two-wire connection)



Dimensions (mm)

### CARATTERISTICHE TECNICHE

### TECHNICAL FEATURES

	<b>TRP</b>	<b>TRP/4-20/2F</b>	
SEGNALE DI USCITA	3.3 mV/V	4 - 20mA	OUTPUT SIGNAL
LINEARITA'	< +/- 1 %	< +/- 1 %	LINEARITY
TEMPERATURA DI LAVORO	- 10°C + 60°C	- 10°C + 60°C	OPERATING TEMPERATURE
TEMPERATURA DI STOCCAGGIO	- 20°C + 70°C	- 20°C + 70°C	STORAGE TEMPERATURE
EFFETTO DELLA TEMPERATURA SULLO ZERO	0.01% /°C	0.01% /°C	TEMPERATURE EFFECT ON ZERO
EFFETTO DELLA TEMPERATURA SUL F.SCALA	0.01% /°C	0.01% /°C	TEMPERATURE EFFECT ON SPAN
TENSIONE DI ALIMENTAZIONE	5 - 15 VDC	12 - 28 VDC	SUPPLY VOLTAGE
RESISTENZA D'INGRESSO E D'USCITA TRP 60bar	400 ohm +/-50		INPUT/OUTPUT RESISTANCE TRP 60 bar
RESISTENZA D'INGRESSO E D'USCITA TRP 600bar	400 ohm +/-50		INPUT/OUTPUT RESISTANCE TRP 600 bar
BILANCIAMENTO DI ZERO	+/- 1 %	+/- 1 %	ZERO BALANCE
RESISTENZA DI CARICO		0 - 400 ohm	LOADING RESISTANCE
RESISTENZA D'ISOLAMENTO	> 2000 Mohm	> 2000 Mohm	INSULATION RESISTANCE
PRESSIONE LIMITE	150%	150%	MAX PERMISSIBLE PRESSURE
PRESSIONE ROTTURA	> 300%	> 300%	BREAKING PRESSURE